



PIMA

APPAREL

9TH EDITION



Founded in 2006, a California based import manufacturer and the sole distributor of the PIMATEE. We are factory direct, allowing for the highest of QC standards and most accurate shipping. Our garments are constructed with combed ring-spun cotton. Fabrics are washed before cut and sewn construction. The washing process creates super-softness, helps to minimize shrinkage, and ensure a better fit! It is our mission to provide the consumer with the very best in quality trend merchandise.

The company is committed to producing the finest light-weight knit fabrics in updated colors and body styles, for our customers. We greatly appreciate the opportunity to partner with you in your t-shirt business.

PIMATEE is carried in-stock, and ready for at once shipping. We keep over TWO MILLION TEES in the California warehouse. All merchandise is sold as open stock: ADULT S-2XL and YOUTH XS-L. There are no minimums order quantities required You select your size, color, and qty as needed.

****We also offer re-label services, and produce custom full package private label programs to your spec, contact us for more details.**

CONTENTS

Introduction

Biography	02
Contents	03
Fabric Detail	04
New Styles	06 - 09

Women

Young Contemporary Fit

New Styles	10 - 11
Tank / Sleeveless	12 - 17
Short Sleeve	19 - 33
3/4 Sleeve	34 - 35
Long Sleeve	37 - 43
Pants	44

Missy Elegant Fit

New Styles	46
Tank / Sleeveless	47 - 48
Short Sleeve	49 - 51
3/4 Sleeve	53
Long Sleeve	54 - 55

Men

New Styles	57
Tank / Sleeveless	57
Short Sleeve	58 - 61
3/4 Sleeve	62
Long Sleeve	62 - 64

Unisex

Short Sleeve	66 - 67
Long Sleeve	67

Youth

Girls

New Styles	69 - 70
Tank / Sleeveless	70 - 72
Short Sleeve	73 - 75
3/4 Sleeve	76
Long Sleeve	76 - 77

Boys

New Styles	78
Tank / Sleeveless	79
Short Sleeve	79
3/4 Sleeve	80

Youth Unisex

Short Sleeve	80 - 81
Long Sleeve	81

Color Card	82 - 89
Index	90 - 91
Sizing Chart	92 - 97



FABRIC

PIMA APPAREL offers a variety of fabrics, COMBED RING-SPUN and PRE-LAUNDERED for extra softness and minimal shrinkage.

100% COTTON

* Heather Gray 80% / 20% Cotton-Poly Blend

32s Jersey 4.3oz / 145g

40s Fine Jersey 3.8oz / 130g

50s Super Fine Jersey 3.2oz / 110g

40s 2x1 Rib 4.4oz / 160g

40s Drop Needle 4.4oz / Rib 150g

BAMBOO BLEND

50% Rayon from Bamboo / 40% Cotton / 10%

Soybean 32s, 4.1 oz / 140g

SLUB JERSEY

40s 100% Cotton Jersey, 4.1oz / 140g Juniors

40s 100% Cotton Jersey, 4.7oz / 160g Mens

32s 65% Polyester 35% Rayon, 4.1oz / 140g

New AB Slub 50% Polyester / 50% Rayon, 4.3oz / 145g

POLYESTER LINEN BLEND

85% Polyester / 15% Linen Blend Jersey, 32s, 4.1oz / 140g

BURNOUT

65% POLYESTER / 35% COTTON, 32s 3.5oz / 120g

NUB FABRIC

96% Cotton 4% Polyester, 40s 3.8oz / 130g

COTTON POLYESTER BLEND, CVC

60% Cotton / 40% Polyester Jersey, 45s 3.5oz / 120g

TRI-BLEND

50% Polyester / 25% Cotton / 25% Rayon Jersey

32s, 4.2oz / 145g

THERMAL

60% Cotton / 40% Polyester

40s 4.7oz / 160g Mens, Ladies & Juniors Hoodie

40s 3.8oz / 130g for Juniors

FRENCH TERRY

65% Cotton / 35% Polyester 32s 5.3oz / 180g

POLYESTER VISCOSE BLEND

65% Polyester / 35% Viscose, 30s 3.7oz / 125g

*Heather Gray: 52% Polyester / 48% Viscose

MODAL POLYESTER BLEND

70% Modal / 30% Polyester, 32s 3.7oz / 125g



NEW STYLES

3216
NEW



3217
NEW



3311
NEW



NEW STYLES

8911
NEW



7311
NEW



7312
NEW



NEW STYLES



NEW STYLES

9017
NEW



9018
NEW



9019
NEW



9607
NEW



3217
NEW Relaxed Mock Neck Long Sleeve Pullover
50% POLYESTER 25% COTTON, 25% RAYON JERSEY 32S,
4.2OZ / 145G - S - XXL
Heather Black, Heather Gray, Military Green, Navy.

PIMA
APPAREL

WOMEN
YOUNG CONTEMPORARY
FIT

3311

NEW Tank Top with Slit Back

65% POLYESTER 35% VISCOSE 30S, 3.7OZ / 125G - S-XXL
Black, H Charcoal, H Gray, Peach Blush, White.



3216

NEW Rolled Cuff Short Sleeve Boxy Tee

50% POLYESTER 25% COTTON
25% RAYON 32S, 4.2OZ / 145G - S - XXL
Heather Black, Heather Gray, Heather White,
Military Green, Turquoise.



NEW



8911

NEW Hooded Crop Long Sleeve Sweatshirt

65% COTTON 35% POLYESTER FRENCH TERRY 32S,
5.3OZ / 180G - S - XXL
Black, Blue, Lt Gray, Papaya, Peacock, Pink.



1206

Cotton Nub Crop Tank

96% COTTON / 4% POLYESTER NUB 40S, 3.8OZ / 130G - S-XXL

Lime, Mint Gum, Moonstone, Papaya, Spring Blue, Very Berry.

1207

Curve Hem Nub Jersey Ringer Tank

96% COTTON / 4% POLYESTER NUB 40S, 3.8OZ / 130G - S-XXL

Arctic Blue, Lime, Mint Gum, Moonstone,
Papaya, Pink, Red, Spring Blue.



2000

2x1 Rib Tank Top

100% COTTON 2X1 RIB 40S, 4.7OZ / 160G - S-XXL

Black, Cocoa, Kelly Green, Light Blue, Light Pink, Lipstick, Pink Flambe, Royal Blue, White.

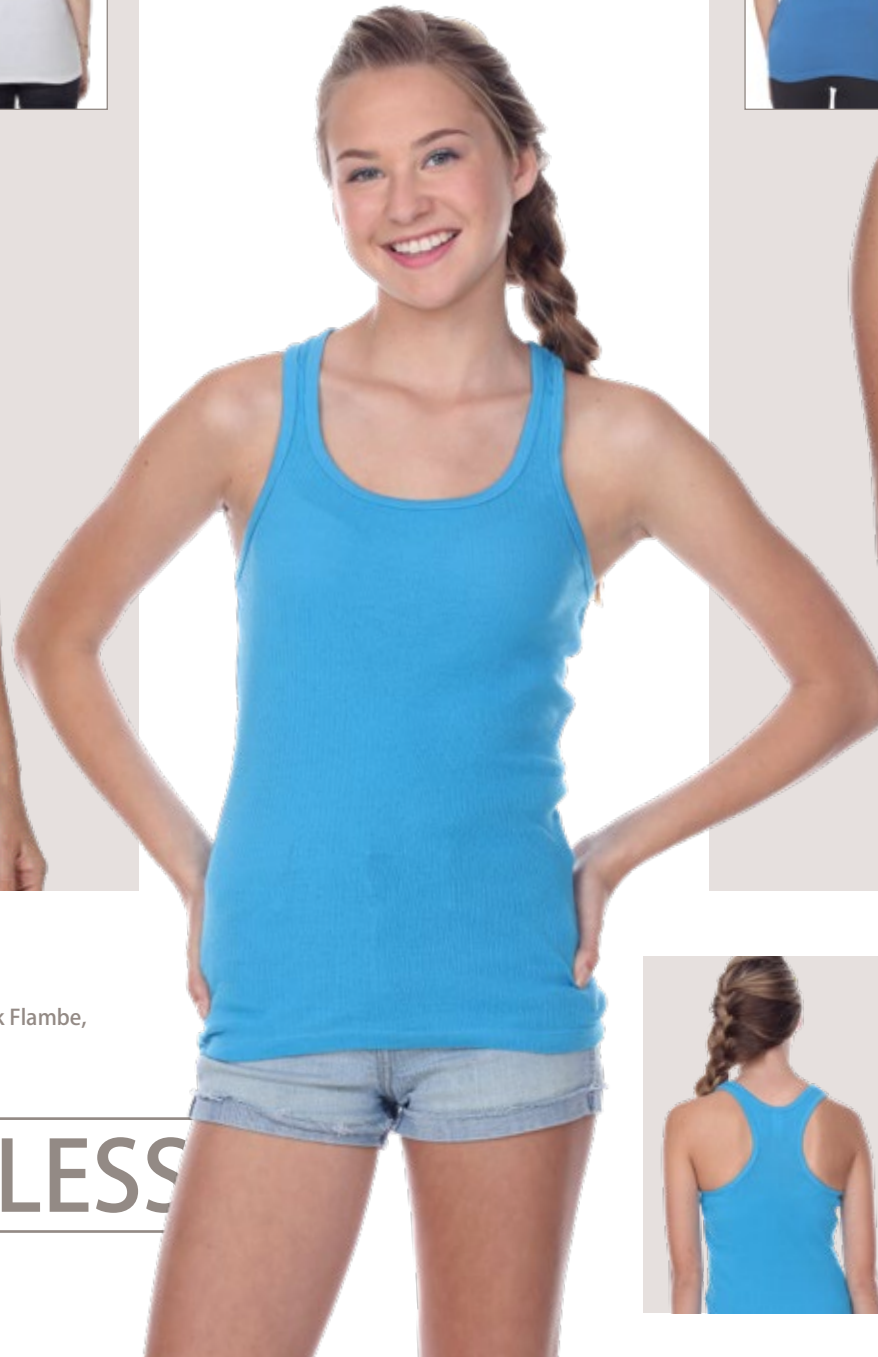
TANK/SLEEVELESS

2001

Drop Needle Rib Racerback Tank

100% COTTON DROP NEEDLE RIB 40S, 4.4OZ / 150G - S-XXL

Black, Dazzling Blue, Pink Flambe, Purple, Turquoise, White,

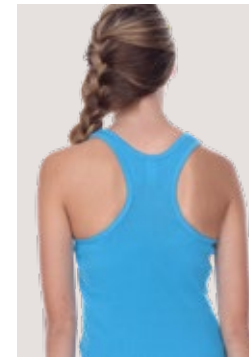


2002

Fine Jersey Tank Top

100% COTTON JERSEY 32S, 4.3OZ / 145G - S-XXL

Black, Light Blue, Light Gray, Light Pink, Red, Royal Blue, White,

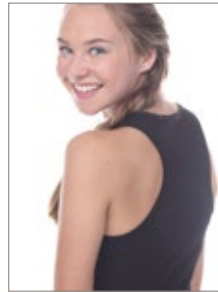


2003

Slub Racerback Tank Top

100% COTTON SLUB JERSEY 40S, 4.1OZ / 140G - S-XXL

Antique Jade, Black, Cream, Light Pink, Lime, Lipstick, Mint Gum, Pink Flambe, Poppy, Purple, Raspberry, Red, Sea Foam, Turquoise, White.



2004

Racerback Tank Top

85% POLYESTER / 15% LINEN 32S, 4.1OZ / 140G - S-XXL

Antique Pink, Black, Blueberry, Orange Sorbet, Purple, Raspberry, Turquoise, Ultramarine, Vintage Black.

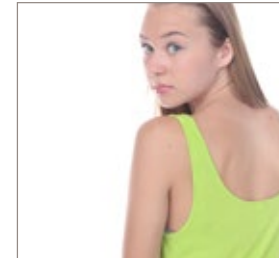


2006

Rayon From Bamboo Blend Crop Tank

50% RAYON MADE FROM BAMBOO / 40% COTTON / 10% SOYBEAN, JERSEY 32S, 4.1OZ / 140G - S-XXL

Black, Dazzling Blue, Lime, Mint Gum, Papaya, Paradise Berry, Peacock, Pink Flambe, White.



2007

Scoop Neck Curve Hem Tank

100% COTTON JERSEY 40S, 3.8OZ / 130G - S-XXL

Black, Dazzling Blue, Lime, Mint Gum, Papaya, Raspberry, Sea Foam, White.



2008

Cover Up Tank Dress

100% COTTON JERSEY 32S, 4.3OZ / 145G - S-XXL

Black, Dazzling Blue, Lime, Papaya, Raspberry, White,



2009

Poly Linen Muscle Tank

85% POLYESTER / 15% LINEN 32S, 4.1OZ / 140G - S-XXL

*New Color : Blueberry, Orange Sorbet, Purple, Turquoise

Antique Pink, Black, Ultramarine, Vintage Black

*Tear Away Label





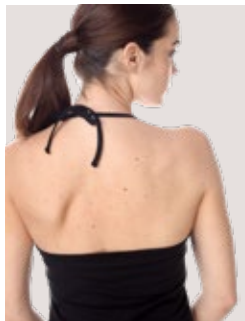
2010

Halter Top

95% COTTON / 5% SPANDEX JERSEY 32S,
4.7OZ / 180G - S-XXL

Black, White.

*Tear Away Label



2011

Vented Muscle Tank

85% POLYESTER / 15% LINEN 32S, 4.1OZ / 140G - S-XXL

*New Color : Blueberry, Orange Sorbet, Purple, Turquoise

Antique Pink, Black, Ultramarine, Vintage Black

*Tear Away Label



2012

Workout Muscle Tank

60% COTTON / 40% POLYESTER JERSEY 45S,

3.5 OZ / 120G - S-XXL

Charcoal, Black, White. *Tear Away Label





3208

Sleeveless Hoodie

50% POLYESTER / 25% COTTON / 25% RAYON
TRI BLEND JERSEY 32S, 4.2OZ / 145G - S-XXL
Black, Heather Gray.

*Tear Away Label



3301

Racerback Flowy Tank

65% POLYESTER / 35% VISCOSE 30S, 3.7OZ / 125G - S-XXL

*HEATHER GRAY: 52% POLYESTER / 48% VISCOSE
Black, Heather Charcoal, *Heather Gray, Mint, Peach
Blush, Pink, Sea Breeze, White. **Tear Away Label



3302

Shark-Bite Tank

65% POLYESTER / 35% VISCOSE 30S, 3.7OZ / 125G - S-XXL

*HEATHER GRAY: 52% POLYESTER / 48% VISCOSE
Black, Heather Charcoal, *Heather Gray, Mint, Peach Blush,
Pink, Princess Blue, Red, Sea Breeze, White. **Tear Away Label



3304

Modal Blend Tank

70% MODAL / 30% POLYESTER 32S, 4.1OZ / 140G - S-XXL

Black, White. **Tear Away Label





YOUNG FIT
SHORT SLEEVE

PIMA
APPAREL



1000

The Luxury Cap Sleeve

100% COTTON JERSEY 40S, 3.8OZ / 130G - S-XXL

***HEATHER GRAY: 80% COTTON / 20% POLYESTER**

Beige, Black, Bright Yellow, Burnt Orange, Charcoal, Chocolate, Coffee, Dusty Blue, Fuchsia, *Heather Gray, Indigo, Ivory, Kelly Green, Light Blue, Light Gray, Light Pink, Light Yellow, Lime, Lipstick, Mauve, Mint Gum, Olive, Papaya, Peacock, Purple, Raspberry, Red, Royal, Salmon, Thyme, True Navy, Turquoise, White,



1001

Scoop Neck Curve Hem Tee

100% COTTON JERSEY 40S, 3.8OZ / 130G - S-XXL

Black, Dazzling Blue, Lime, Mint Gum, Papaya, Raspberry, Sea Foam, White.



1003

Deep V Cap Sleeve Tee

100% COTTON JERSEY 40S, 3.8OZ / 130G - S-XXL

Black, Purple, Red, Sea Foam, White.

SHORT SLEEVE

1004

Short Sleeve Regular V-Neck

100% COTTON JERSEY 40S, 3.8OZ / 130G - S-XXL

*HEATHER GRAY : 80% COTTON / 20% POLYESTER

Black, Dazzling Blue, *Heather Gray, Lime, Mint
Gum, Papaya, Raspberry, Red, Sea Foam, White.



1008

Short Sleeve Dorm Shirt

100% COTTON JERSEY 40S, 3.8OZ / 130GG - S-XXL

*HEATHER GRAY : 80% COTTON / 20% POLYESTER

Black, Fuchsia, *Heather Gray, Sea Foam, White.

1201

Cotton Nub Scoop Neck Curve Hem Tee

96% COTTON / 4% POLYESTER NUB 40S, 3.8OZ / 130G - S-XXL

Lime, Mint Gum, Moonstone, Red, Spring Blue, Very Berry.



1202

Cotton Nub Short Sleeve Crop Box Tee

96% COTTON / 4% POLYESTER NUB 40S, 3.8OZ / 130G - S-XXL

Lime, Mint Gum, Moonstone, Papaya, Spring Blue, Very Berry.



1203

Cotton Nub Short Sleeve Regular V-Neck

96% COTTON / 4% POLYESTER NUB 40S, 3.8OZ / 130G - S-XXL

Lime, Mint Gum, Moonstone, Papaya, Pink, Red.



3000

Cap Sleeve Blended Crew Neck

60% COTTON / 40% POLYESTER JERSEY 45S,
3.5OZ / 120G - S-XXL

Antique Jade, Black, Charcoal, Dazzling Blue, Espresso, Indigo, Light Blue,
Light Brown, Light Pink, Olive, Red, Very Berry, White.



3001

Cap Sleeve Blended Ringer Tee

60% COTTON / 40% POLYESTER JERSEY 45S,
3.5OZ / 120G - S-XXL

Light Blue/Indigo, Light Brown/Espresso, Light Pink/Dark Pink,
Rose/Dark Rose, Silver/Charcoal,



3002

Scoop Neck Short Sleeve Boxy Straight Tee

60% COTTON / 40% POLYESTER JERSEY 45S, 3.5OZ / 120G - S-XXL
Antique Jade, Black, Charcoal, Dazzling Blue, Red, White.

3200

Tri Blend Short Sleeve Crew Neck Tee

50% POLYESTER / 25% COTTON / 25% RAYON

TRI BLEND JERSEY 32S, 4.2OZ / 145G - S-XXL

*New Color : True Black, True White.

Black, Cobalt Blue, Cranberry, Emerald, Heather Gray, Lyons Blue, Pink, Purple, Red, Turquoise, White.



3203

Tri Blend Short Sleeve Deep V-Neck Tee

50% POLYESTER / 25% COTTON / 25% RAYON

TRI BLEND JERSEY 32S, 4.2OZ / 145G - S-XXL

Black, Cobalt Blue, Cranberry, Emerald, Heather Gray, Lyons Blue, Pink, Purple, Turquoise, Red, White.



3207

Tri Blend Essential Hi-Lo Pocket Tee

50% POLYESTER / 25% COTTON / 25% RAYON

TRI BLEND JERSEY 32S, 4.2OZ / 145G - S-XXL

Black, Cobalt Blue, Heather Gray, Pink, White.



3300

Relaxed Modal Blend Tee

70% MODAL / 30% POLYESTER 32S, 4.1OZ /

140G - S-XXL

Black, White. **Tear Away Label



3303

Relaxed Curve Hem Modal Blend V-Neck Tee

70% MODAL / 30% POLYESTER 32S, 4.1OZ / 140G - S-XXL

Black, White. **Tear Away Label



3305

Hi-Lo Shirred Back Tee

65% POLYESTER / 35% VISCOSE 30S, 3.7OZ / 125G - S-XXL

*HEATHER GRAY: 52% POLYESTER / 48% VISCOSE

Black, Heather Charcoal, *Heather Gray, White.

**Tear Away Label



3306

Drop Shoulder Tee

65% POLYESTER / 35% VISCOSE 30S, 3.7OZ / 125G - S-XXL

*HEATHER GRAY: 52% POLYESTER / 48% VISCOSE

Black, Heather Charcoal, *Heather Gray, White.

**Tear Away Label



3307

Modern Cap Sleeve Hi-Lo Tee

65% POLYESTER / 35% VISCOSE 30S, 3.7OZ / 125G - S-XXL

*HEATHER GRAY: 52% POLYESTER / 48% VISCOSE

Black, Heather Charcoal, *Heather Gray, White. **Tear Away Label

3308

Short Sleeve Vented Tee

65% POLYESTER / 35% VISCOSE 30S, 3.7OZ / 125G - S-XXL

*HEATHER GRAY: 52% POLYESTER / 48% VISCOSE

Black, *Heather Gray, White.

**Tear Away Label



3400

Poly Rayon Slub Scoop Neck Tee

65% POLYESTER / 35% RAYON SLUB JERSEY

32S, 4.1OZ / 140G - S-XXL

Black, Dazzling Blue, Mint Gum, Papaya, Paradise Berry, Peacock, White.

3401

Poly Rayon Slub Boxy Crop Tee

65% POLYESTER / 35% RAYON SLUB JERSEY 32S,

4.1OZ / 140G - S-XXL

Black, Dazzling Blue, Papaya, Pink Flambe, White.



3500

Burnout Scoop Neck Tee

65% POLYESTER / 35% COTTON JERSEY 32S, 3.5OZ / 120G - S-XXL

Aqua, Black, Bright Pink, Deep Purple, White.



3503

Burnout V-Neck Tee

65% POLYESTER / 35% COTTON JERSEY 32S, 3.5OZ / 120G - S-XXL

Black, Bright Pink, Deep Purple,
Aqua, White.



BURNOUT JERSEY



3800

Poly Linen Short Sleeve Crew Neck Tee

85% POLYESTER / 15% LINEN 32S, 4.1OZ / 140G - S-XXL

Antique Pink, Antique Red, Black, Blueberry, Charcoal, Mint, Orange Plum, Purple, Raspberry, Sorbet, Turquoise, Ultramarine, Vintage Black.

3803

Poly Linen Short Sleeve Deep V Neck Tee

85% POLYESTER / 15% LINEN 32S, 4.1OZ / 140G - S-XXL

Antique Pink, Antique Red, Black, Blueberry, Charcoal, Mint, Orange Sorbet, Plum, Purple, Raspberry, Turquoise, Ultramarine, Vintage.





3900

Bamboo Blend Short Sleeve Crew Neck Tee

50% RAYON MADE FROM BAMBOO / 40% COTTON /
10% SOYBEAN, JERSEY 32S, 4.1OZ / 140G - S-XXL

Black, Dazzling Blue, Papaya, Peacock, Pink Flambe, White.

3903

Bamboo Blend Short Sleeve Deep V Tee

50% RAYON MADE FROM BAMBOO / 40% COTTON / 10% SOYBEAN, JERSEY 32S, 4.1OZ / 140G - S-XXL

Black, Dazzling Blue, Papaya, Peacock, Pink Flambe, White.





3905

Bamboo Blend Curve Hem Dolman

50% RAYON MADE FROM BAMBOO / 40% COTTON / 10% SOYBEAN,
JERSEY 32S, 4.1OZ / 140G - S-XXL

Black, Dazzling Blue, Lime, Mint Gum, Papaya, Peacock, Pink Flambe,
White.



4000

Short Sleeve Boyfriend Tee

100% COTTON JERSEY 32S, 4.3OZ / 145G - S-XXL

*HEATHER GRAY : 80% COTTON / 20% POLYESTER

Black, Brown, Charcoal, *Heather Gray, Indigo, Kelly Green,
Light Blue, Light Gray, Light Pink, Light Yellow, Lipstick,
Natural, Navy, Olive, Purple, Red, Turquoise, White.



4002

Essential Loose Body Tee

100% COTTON JERSEY 32S, 4.3OZ / 145G - S-XXL

*HEATHER GRAY : 80% COTTON / 20% POLYESTER

Black, *Heather Gray, White.

*Tear Away Label

5001

Cap Sleeve Scoop Neck Tee

100% COTTON JERSEY 50S, 3.2OZ / 110G - S-XXL

*HEATHER GRAY: 80% COTTON / 20% POLYESTER

Black, Coffee, Ivory, *Heather Gray, Light Blue, Light Pink, Lipstick, White.



5003

Cap Sleeve V-Neck Tee

100% COTTON JERSEY 50S, 3.2OZ / 110G - S-XXL

*HEATHER GRAY : 80% COTTON / 20% POLYESTER

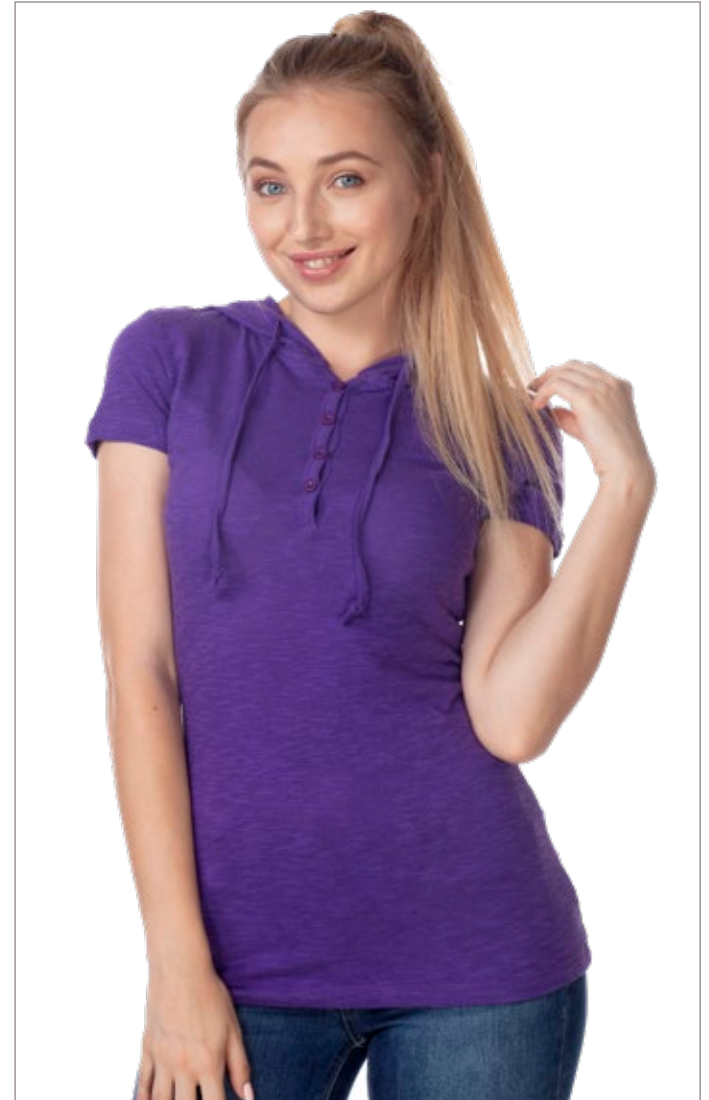
Black, Chocolate, Coffee, Fuchsia, *Heather Gray, Indigo, Kelly Green, Light Blue, Mauve, Red, Turquoise, White.

6050

Cap Sleeve Slub Tee

100% COTTON SLUB JERSEY 40S, 4.1OZ / 140G - S-XXL

Antique Jade, Black, Burnt Orange, Cream, Indigo, Light Blue, Light Gray, Light Pink, Light Yellow, Lime, Lipstick, Mauve, Mint Gum, Olive, Poppy, Pink Flambe, Purple, Red, Royal Blue, Raspberry, Sea Foam, Turquoise, White.



6051

Short Sleeve Slub Henley Hoodie

100% COTTON SLUB JERSEY 40S, 4.1OZ / 140G - S-XXL

Black, Light Pink, Lipstick, Purple, Turquoise, White.





6053

Cap Sleeve Cotton Slub V-Neck Tee

100% COTTON SLUB JERSEY 40S, 4.1OZ / 140G - S-XXL

Antique Jade, Black, Light Blue, Light Pink, Lime, Lipstick, Mauve, Mint Gum, Pink Flambe, Poppy, Purple, Raspberry, Red, Royal Blue, Sea Foam, Turquoise, White.



6052

Short Sleeve Slub Polo

100% COTTON SLUB JERSEY 40S, 4.1OZ / 140G - S-XXL

Lipstick, Moonstruck, Royal Blue.



8901

French Terry Short Sleeve Zip Hoodie

65% COTTON / 35% POLYESTER FRENCH TERRY 32S, 5.3OZ / 180G - S-XXL

Black, Light Gray, Lime, Papaya, Peacock, Pink Flambe.



3204

Tri Blend Split V 3/4 Sleeve Raglan

50% POLYESTER / 25% COTTON / 25% RAYON TRI BLEND JERSEY

32S, 4.20Z / 145G - S-XXL

Black, Lyons Blue, Pink, Purple, Red. *Heather Gray Contrast Binding



3205

Tri Blend Hi-Lo Tunic

50% POLYESTER / 25% COTTON / 25% RAYON TRI BLEND JERSEY 32S, 4.20Z / 145G - S-XXL

Black, Cranberry, Heather Gray, Lyons Blue.





3206

Tri Blend 3/4 Contrast Sleeve Raglan

50% POLYESTER / 25% COTTON / 25% RAYON

TRI BLEND JERSEY 32S, 4.2OZ / 145G - S-XXL

Heather Gray/Black, Heather Gray/Cobalt Blue, Heather Gray/Pink, Heather Gray/Red, Heather Gray/White.



3454

3/4 Sleeve Curve Hem Raglan

BODY: 65% POLYESTER / 35% RAYON SLUB, JERSEY 32S, 4.1OZ/140G - S-XXL

SLEEVE: 85% POLYESTER / 15% LINEN, JERSEY 32S 4.1OZ / 140G

Black/Black, Black/Vintage Black, Dazzling Blue/Blueberry, Papaya/Orange Sorbet, Peacock/Ultramarine, Pink Flambe/Antique Pink, Pink Flambe/Charcoal.

3/4 SLEEVE

6054

Boatneck 3/4 Sleeve Slub Raglan

100% COTTON SLUB JERSEY 40S, 4.1OZ / 140G - S-XXL

White/Antique Jade, White/Black, White/Lipstick, White/Raspberry, White/Red, White/Royal Blue, White/Sea Foam, White/Pink Flambe, White/Purple.





YOUNG FIT
LONG SLEEVE

PIMA
APPAREL

1100

Long Sleeve Crew Neck

100% COTTON JERSEY 40S, 3.8OZ / 130G - S-XXL

*HEATHER GRAY : 80% COTTON / 20% POLYESTER

Black, Chocolate, *Heather Gray, Lipstick, White.



1101

kimono long sleeve hi-lo body tee

100% COTTON JERSEY 40S, 3.8OZ / 130G - S-XXL

Black, Dazzling Blue, Peacock, Raspberry, White.



1103

Long Sleeve "Tear Drop" V-Neck Tee

100% COTTON JERSEY 40S, 3.8OZ / 130G - S-XXL

Black, Chocolate, Light Blue, Lipstick, White.



3100

Long Sleeve Crew Neck Tee

60% COTTON / 40% POLYESTER JERSEY 45S, 3.5OZ / 120G - S-XXL

Antique Jade, Black, Charcoal, Dazzling Blue, Indigo, Light Blue, Light Brown, Olive, White.



3101

Cotton Poly Body With Black Thermal Long Sleeve

BODY:60% COTTON / 40% POLYESTER JERSEY 45S, 3.5OZ / 120G - S-XXL

SLEEVE: 60% COTTON / 40% POLYESTER THERMAL, 3.8OZ / 130G

Antique Jade/Black, Charcoal/Black, Dazzling Blue/Black, Red/Black, Very Berry/Black.



3102

Cotton Poly Contrast Long Sleeve Pullover

60% COTTON / 40% POLYESTER JERSEY 45S 3.5OZ / 120G - S-XXL

Ash/Black, Antique Jade / Charcoal, Dazzling Blue/Charcoal, Espresso/BlackIndigo/Ash, Red/Ash.





3804
Poly Linen Long Leeve Crew Neck Tee
85% POLYESTER / 15% LINEN 32S, 4.1OZ / 140G - S-XXL
Black, Charcoal, Purple, Raspberry.

3904

Bamboo Blend Crop Long Sleeve Pullover
50% RAYON MADE FROM BAMBOO / 40% COTTON /
10% SOYBEAN, JERSEY 32S, 4.1OZ / 140G - S-XXL
Black, Dazzling Blue, Mint Gum, Moonstone, Papaya,
Paradise Berry, Peacock.



4160

Long Sleeve Jersey 2Fer Thermal

BODY: 100% COTTON JERSEY 32S, 4.3OZ / 145G - S-XXL

SLEEVE: 60% COTTON / 40% POLYESTER THERMAL 40S, 4.7OZ / 160G

Black/ White, Brown/Coffee, Military Green/ Lt. Olive, Navy/*Heather Gray.

*Heather Gray : 80% Cotton , 20% Polyester



5101

Long Sleeve Boatneck Tee

100% COTTON JERSEY 50S, 3.2OZ / 110G - S-XXL

Black, Coffee, Light Blue, Light Pink, Lipstick, White.



6100

Long Sleeve Crew Neck Thermal

60% COTTON / 40% POLYESTER THERMAL

40S, 3.8OZ / 130G - S-XXL

Black, Charcoal, Light Pink, White.

6101

Long Sleeve (Waffle) Thermal Hoodie

60% COTTON / 40% POLYESTER THERMAL 40S, 4.7OZ / 160G - S-XXL

Black, Charcoal, Cream, Coffee, Heather Gray, Light Pink, Lipstick, White.



6102

Tri Blend Hoodie Pullover

50% POLYESTER / 25% COTTON / 25% RAYON TRI BLEND JERSEY
32S, 4.2OZ / 145G - S-XXL

Black, Cardinal, Heather Gray, Indigo, Purple.



6150

Long Sleeve Slub Crew Neck Tee

100% COTTON SLUB JERSEY 40S, 4.1OZ / 140G - S-XXL
Antique Jade, Black, Charcoal, Light Pink, Lipstick, Purple,
Turquoise, White.

6152

Long Sleeve Zip Front Slub Hoodie

100% COTTON SLUB JERSEY 40S, 4.1OZ / 140G - S-XXL

Black, Charcoal, Light Pink, Lipstick, Lyons Blue, Pink Flambe, White.



6153

Poly Linen Long Sleeve Zip Hoodie Jacket

85% POLYESTER / 15% LINEN 32S, 4.1OZ / 140G - S-XXL

Black, Eggplant, Purple, Nautical Blue, Raspberry, Red, Turquoise.



6153C

Juniors 2-Tone Zip Front Pocket Hoodie Jacket

BODY: 65% POLY / 35% RAYON SLUB JERSEY

32S, 4.1 OZ / 140 G - S-XXL

SLEEVE & HOOD: 85% POLY / 15% LINEN JERSEY

32 S, 4.1 OZ / 140 G

Body/Sleeve & Hood: Black/Vintage Black,

Dazzling Blue/Blueberry,

Peacock/Ultramarine,

Pink Flambe/Antique Pink,

White/Black.



8902

French Terry Long Sleeve Zip Hoodie

65% COTTON / 35% POLYESTER FRENCH TERRY 32S,

5.3OZ / 180G - S-XXL

Black, Blue, Eggplant, Light Gray, Papaya, Peacock, Pink Flambe, Red, Violet.



8904

French Terry Long Sleeve Pullover

65% COTTON / 35% POLYESTER FRENCH TERRY 32S, 5.3OZ / 180G - S-XXL
Black, Blue, Eggplant, Light Gray, Lime, Papaya, Peacock, Pink Flambe, Red, Violet.



8905

French Terry Tunic Hoodie

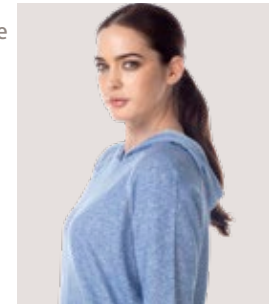
65% COTTON / 35% POLYESTER FRENCH TERRY
32S, 5.3OZ / 180G - S-XXL
Black, Blue, Light Gray, Papaya, Peacock, Pink Flambe.



8906

French Terry Boxy Pullover Hoodie

65% COTTON / 35% POLYESTER FRENCH TERRY 32S,
5.3OZ / 180G - S-XXL
*New Color : Blue
Black, Light Gray, Lime,
Papaya, Peacock, Pink Flambe

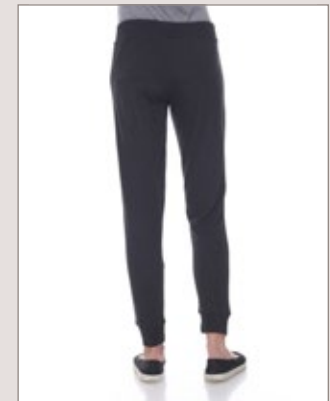
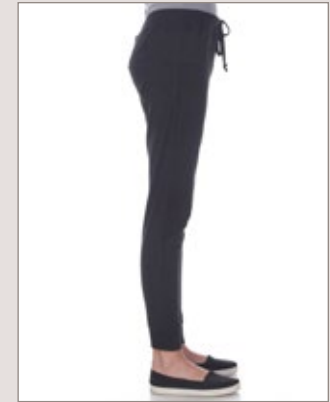




3210

Lounge Pant

50% POLYESTER / 25% COTTON / 25% RAYON TRI BLEND JERSEY 32S, 4.2OZ / 145G - S-XXL
Black, Heather Gray. *Tear Away Label



3211

Jogger

50% POLYESTER / 25% COTTON / 25% RAYON TRI BLEND JERSEY 32S, 4.2OZ / 145G - S-XXL
Black, Heather Gray. *Tear Away Label

PANTS



MISSY
ELEGANT FIT

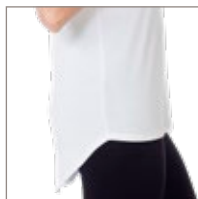
PIMA

APPAREL

7311 | **NEW** Ladies Pleated Back Tank Top
65% POLYESTER 35% VISCOSE 30S, 3.7OZ / 125G - S-XXL
Black, H Gray, Peach Blush, Princess Blue, White.



7312 | **NEW** Ladies Casual Open V Back Tank Top
70% MODAL 30% POLYESTER 32S, 3.7OZ / 125G - S - XXL
Black, White.



NEW



7313 | **NEW** Ladies Casual Open V Back Short Sleeve Tee
70% MODAL 30% POLYESTER 32S, 3.7OZ / 125G - S - XXL
Black, White.



7102

Ladies Basic Jersey Tank

100% COTTON JERSEY 40S, 3.8OZ / 130G - S-XXL

Black, Dazzling Blue, Mint Gum, Papaya, Peacock, Raspberry,
Sea Foam, White.



7304

Ladies Curve Hem Modal Blend Tank

70% MODAL / 30% POLYESTER 32S, 4.1OZ / 140G - S-XXL

Black, White.

**Tear Away Label



TANK/SLEEVELESS

7305

Ladies Poly Linen Tank

85% POLYESTER / 15% LINEN 32S, 4.1OZ / 140G - S-XXL

Antique Pink, Black, Blueberry, Vintage Black, Ultramarine.

**Tear Away Label



7307

Ladies Tri Blend Scoop Curve Hem Tank

50% POLYESTER / 25% COTTON / 25% RAYON

TRI BLEND JERSEY 32S, 4.2OZ / 145G - S-XXL

Black, Cobalt Blue, Heather Gray, Pink, Red, White.



7402

Ladies Poly Rayon Slub Tank

65% POLYESTER / 35% RAYON SLUB JERSEY 32S, 4.1OZ / 140G - S-XXL

Black, Dazzling Blue, Papaya, Peacock, Pink Flambe, White.



7100

Ladies Jersey Short Sleeve Scoop Neck Tee

100% COTTON JERSEY 40S, 3.8OZ / 130G - S-XXL

*HEATHER GRAY: 80% COTTON / 20% POLYESTER

Black, Dazzling Blue, *Heather Gray, Papaya, Peacock, Red, Raspberry, White.



7104

Ladies Regular V-Neck Short Sleeve Tee

100% COTTON JERSEY 40S, 3.8OZ / 130G - S-XXL

*HEATHER GRAY: 80% COTTON / 20% POLYESTER

Black, Dazzling Blue, Fuchsia, Sea Foam, White.

*Heather Gray.



7300

Ladies Short Sleeve Shark-Bite Tee

65% POLYESTER / 35% VISCOSE 30S, 3.7OZ / 125G - S-XXL

*HEATHER GRAY: 52% POLYESTER / 48% VISCOSE

Black, *Heather Gray, Heather Charcoal, White.

**Tear Away Label



SHORT SLEEVE

7301

Scoop Back Dolman

65% POLYESTER / 35% VISCOSE 30S, 3.7OZ / 125G - S-XXL

*HEATHER GRAY: 52% POLYESTER / 48% VISCOSE

Black, *Heather Gray, White.

**Tear Away Label



7306

LADIES curve hem MODAL BLEND DOLMAN

70% MODAL / 30% POLYESTER 32S, 4.1OZ / 140G - S-XXL

Black, White.

**Tear Away Label



7400

Ladies Poly Rayon Slub Short Sleeve Scoop Neck Tee

65% POLYESTER / 35% RAYON SLUB JERSEY 32S, 4.1OZ / 140G - S-XXL

Black, Dazzling Blue, Papaya, Peacock, Pink Flambe, White.



7805

Ladies Poly Linen Dolman

85% POLYESTER / 15% LINEN 32S, 4.1OZ / 140G - S-XXL

Antique Pink, Black, Blueberry, Charcoal, Orange Sorbet, Ultramarine.



A woman with blonde hair, smiling, stands in a narrow European street. She is wearing a blue long-sleeved top. The background features a stone wall with a window shutter and a potted plant on the left, and a street lamp and foliage on the right.

MISSY
ELEGANT FIT
3/4 SLEEVE

PIMA
APPAREL

7204

Ladies Tri Blend Split V
3/4 Sleeve Raglan

50% POLYESTER / 25% COTTON / 25% RAYON

TRI BLEND JERSEY 32S, 4.2OZ / 145G - S-XXL

Black, Lyons Blue, Pink, Purple, Red.

*Heather Gray Contrast Binding

7303

V-Neck Dolman W/Shark-Bite Hem

65% POLYESTER / 35% VISCOSE 30S, 3.7OZ / 125G - S-XXL

*HEATHER GRAY: 52% POLYESTER / 48% VISCOSE

Black, *Heather Gray, White.

**Tear Away Label

7308

Ladies Hi-Lo 3/4 Sleeve Flowy Tunic

50% POLYESTER / 25% COTTON / 25% RAYON

TRI BLEND JERSEY 32S, 4.2OZ / 145G - S-XXL

*New Color: True White, Turquoise

Black, Cranberry, Heather Gray, Lyons Blue.

7454

Ladies 3/4 Sleeve Curve Hem Raglan

BODY: 65% POLYESTER / 35% RAYON SLUB,

JERSEY 32S, 4.1OZ / 140G - S-XXL

SLEEVE: 85% POLYESTER / 15% LINEN, JERSEY

32S, 4.1OZ / 140G

Black/Black, Black/Vintage Black, Dazzling Blue/
Blueberry, Papaya/Orange Sorbet,
Peacock/Ultramarine, Pink Flambe/Antique Pink,
Pink Flambe/Charcoal.



3/4 SLEEVE

7110

Ladies Long Sleeve Crew Neck Tee With Side Vents

100% COTTON JERSEY 32S, 4.3 OZ / 145G - S-XXL

HEATHER GRAY 80% COTTON / 20% POLYESTER

Black, Fuchsia, *Heather Gray, Light Blue, White.



7154

Ladies Poly Rayon Slub
Long Sleeve Zip Hoodie

65% POLYESTER / 35% RAYON SLUB JERSEY 32S, 4.1OZ / 140G - S-XXL

Black, Dazzling Blue, Peacock, Pink Flambe, White.



7610

Ladies Long Sleeve Crew Neck, Features Cuff
With Exposed Thumb

60% COTTON / 40% POLY BABY WAFFLE THERMAL
40S, 4.7 OZ / 160G - S-XXL

Black, Cream, Heather Grey, True Navy.

*TEAR AWAY LABEL



7904

Ladies Bamboo Blend Long Sleeve Pullover

50% RAYON MADE FROM BAMBOO / 40% COTTON / 10% SOYBEAN, JERSEY 32S, 4.1OZ / 140G - S-XXL

Black, Dazzling Blue, Moonstone, Papaya, Paradise Berry, Peacock.



LONG SLEEVE

7892

Ladies French Terry Long Sleeve Zip Hoodie

65% COTTON / 35% POLYESTER FRENCH TERRY 32S, 5.3OZ / 180G - S-XXL

Black, Blue, Light Gray, Papaya, Peacock, Pink Flambe.



MEN

PIMA

APPAREL



3 7 5 8 | **NEW** Men's Tri Blend Sleeveless Hoodie

50% POLY 25% COTTON 25% RAYON JERSEY 32S, 4.2OZ / 145G - S-XXL
Heather Black, Heather Grey.



2005 Jersey Tank

100% COTTON JERSEY 32S, 4.3OZ / 145G - S-XXL
*HEATHER GRAY : 80% COTTON / 20% POLYESTER
Black, Cardinal, Green Flash, *Heather Gray, Indigo, Red
Orange, Red, Royal Blue, White.



2205

Nub Jersey Ringer Tank

96% COTTON / 4% POLYESTER NUB
40S, 3.8OZ / 130G - S-XXL
Arctic Blue, Lime, Moonstone, Red, Spring Blue.



TANK/SLEEVELESS

3600

Short Sleeve Blended Crew Neck Tee

60% COTTON / 40% POLYESTER JERSEY 45S, 3.5OZ / 120G - S-XXL

Ash, Black, Charcoal, Cream, Espresso, Indigo, Light Blue, Light Brown, Silver, White.



3601

Short Sleeve Blended Crew Neck Raglan

60% COTTON / 40% POLYESTER JERSEY 45S, 3.5OZ / 120G - S-XXL

Antique Jade/Charcoal, Blue/Black, Charcoal/Black, Cream/Burnt Orange, Cream/Sage, Light Blue/Indigo, Red/Charcoal Dazzling, Silver/Charcoal, White/Black.





3700

Poly Linen Blend Crew Neck Tee

85% POLYESTER / 15% LINEN 32S,

4.1OZ / 140G - S-XXL

Black, Charcoal, Cream, Indigo, Nautical Blue, Toffee.



3602

Short Sleeve Blended Crew Neck Ringer

60% COTTON / 40% POLYESTER JERSEY 45S, 3.5OZ / 120G - S-XXL

Charcoal/Black, Cream/Sage, Indigo/Navy, Light Blue/Indigo,
Light Brown/Espresso.

3702

Poly Linen Blend V-Neck Tee

85% POLYESTER / 15% LINEN 32S, 4.1OZ / 140G - S-XXL

Black, Charcoal, Cream, Indigo.

3750

Tri Blend Crew Neck Tee

50% POLYESTER / 25% COTTON / 25% RAYON

TRI BLEND JERSEY 32S, 4.2OZ / 145G - S-XXL

*New Color : True Black, True White

Black, Cardinal, Cinnamon, Cranberry, Cobalt Blue, Emerald, Heather Gray, Indigo, Lyons Blue, Military Green, Navy, Red,.

*New Color



3751

Tri Blend V-Neck Tee

50% POLYESTER / 25% COTTON / 25% RAYON

TRI BLEND JERSEY 32S, 4.2OZ / 145G - S-XXL

Black, Cardinal, Cobalt Blue, Emerald, Heather Gray, Indigo, Lyons Blue, Navy, Red, White.



4600

Slim Fit Short Sleeve
Crew Neck Tee

100% COTTON JERSEY 32S, 4.3OZ / 145G - S-XXL

*HEATHER GRAY : 80% COTTON / 20% POLYESTER

Black, Brown, Burnt Orange, Cardinal, Coffee, Cranberry, Cream, Charcoal, Dusty Blue, Emerald, Green Flash, *Heather Gray, Indigo, Kelly Green, Light Yellow, Light Blue, Light Gray, Military Green, Natural, Navy, Olive, Red Orange, Red, Royal Blue, Turquoise, White, True Navy.



4601

Slim Fit Short Sleeve V-Neck Tee

100% COTTON JERSEY 32S, 4.3OZ / 145G - S-XXL

***HEATHER GRAY : 80% COTTON / 20% POLYESTER**

Black, Brown, Burnt Orange, Cardinal, Charcoal, Cranberry, Cream, Emerald, *Heather Gray, Indigo, Kelly Green, Light Blue, Light Gray, Military Green, Navy, Olive, Red, True Navy, White.



6550

Short Sleeve Crew Neck Slub Tee

100% COTTON SLUB JERSEY 40S, 4.7OZ / 160G - S-XXL

Black, Burnt Orange, Cardinal, Charcoal, Indigo, Lyons Blue, Moon Struck, Olive, White.

6551

Short Sleeve Slub Polo

100% COTTON SLUB JERSEY 40S, 4.7OZ / 160G - S-XXL

Black, Cardinal, Lyons Blue, Moon Struck.





6570

3/4 Sleeve Slub Raglan Crew

100% COTTON SLUB JERSEY 40S, 4.7OZ / 160G - S-XXL

Black/Cardinal, Black/Charcoal, Black/Indigo,
Black/Lyons Blue, Black/Moon Struck.

3/4 SLEEVE

3701

Long Sleeve Blended Crew Neck Raglan

60% COTTON / 40% POLYESTER JERSEY 45S 3.5OZ / 120G - S-XXL

Antique Jade/Charcoal, Charcoal/Black, Cream/Burnt Orange,
Cream/Sage, Dazzling Blue/Black, Light Blue/Indigo, Red/Charcoal,
Silver/Charcoal, White/Black.



4700

Slim Fit Long Sleeve Crew Neck Tee

100% COTTON JERSEY 32S, 4.3OZ / 145G - S-XXL

*HEATHER GRAY : 80% COTTON / 20% POLYESTER

Black, Brown, Cardinal, Charcoal, Cranberry, Emerald, *Heather
Gray, Indigo, True Navy, White.

LONG SLEEVE



4701

Slim Fit Long Sleeve V-Neck Tee
100% COTTON JERSEY 32S, 4.3OZ / 145G - S-XXL
Black, Coffee, White.

4760

Long Sleeve Jersey 2Fer Thermal

BODY: 100% COTTON JERSEY 32S, 4.3OZ / 145G - S-XXL

SLEEVE: 60% COTTON / 40% POLYESTER THERMAL 40S, 4.7OZ / 160G

Black/White, Brown/Coffee, *Heather Gray/White,
Military Green/Lt. Olive, Navy/Heather Gray.

*Heather Gray : 80% Cotton , 20% Polyester



6562

Long Sleeve Slub V-Cut Crew

100% COTTON SLUB JERSEY 40S, 4.7OZ / 160G - S-XXL

Black, Cardinal, Charcoal, Indigo.

6600

Long Sleeve (Waffle) Crew Neck Thermal

60% COTTON / 40% POLYESTER THERMAL 40S,
4.7OZ / 160G - S-XXL

Black, Brown, Charcoal, Cream, Heather Gray, Navy, White.



8705

Long Sleeve Slub Pullover Hoodie

100% COTTON SLUB JERSEY 40S, 4.7OZ / 160G - S-XXL

Black, Burnt Orange, Cardinal, Charcoal, Indigo, Olive, White.



8752

Long Sleeve Zip Front Slub Hoodie

100% COTTON SLUB JERSEY 40S, 4.7OZ / 160G - S-XXL

Black, Cardinal, Indigo, Moon Struck.



UNISEX
PIMA
APPAREL



3752

Adult/Unisex Short Sleeve Crew Neck 'Millenium' Tee

50% POLYESTER / 50% RAYON AB SLUB JERSEY

32S, 4.3 OZ / 145 GRAMS - XS-XXL

Black, Burgundy, Military Green, True Navy.

*Tear Away Label



3755

Adult Unisex "City Tee" Short Sleeve Crew Neck

70% MODAL / 30% POLYESTER 32S, 4.1OZ/ 140G - XS-XXL

Black.

**Tear Away Label



4004

Adult/Unisex Short Sleeve Crew Neck Rolled Cuff Tee
100% COTTON JERSEY 32S, 4.3 OZ / 145G - XS-XXL
Black, White.



3606

Adult/Unisex Long Sleeve Pullover Front Pocket
"Weekend" Hoodie
50% POLYESTER / 25% COTTON / 25% RAYON TRI BLEND
32S, 4.2 OZ / 145 G - XS-XXL
Black, Cardinal, Cobalt Blue, Heather Gray, Indigo,
Military Green, Red, White.
**Tear Away Label



UNISEX

YOUTH GIRLS

PIMA

APPAREL



NEW



9016 | **NEW** Girls Curved Hem Tank Top
60% COTTON 40% POLYESTER JERSEY 45S, 3.5OZ / 120G - XS-L
Bright Yellow, Dazzling Blue, Seafoam, Very Berry.

9017 | **NEW** Girls Rolled Cuff Short Sleeve V neck Tee
60% COTTON 40% POLYESTER JERSEY 45S, 3.5OZ / 120G - XS-L
Bright Yellow, Dazzling Blue, Seafoam, Very Berry.



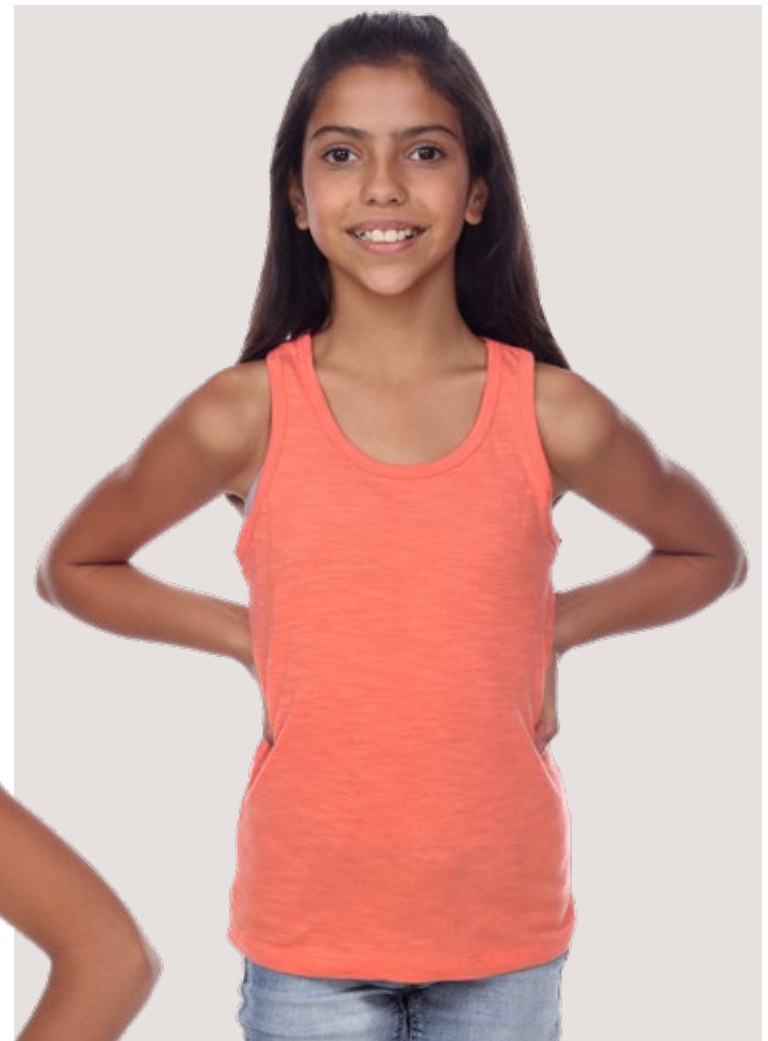
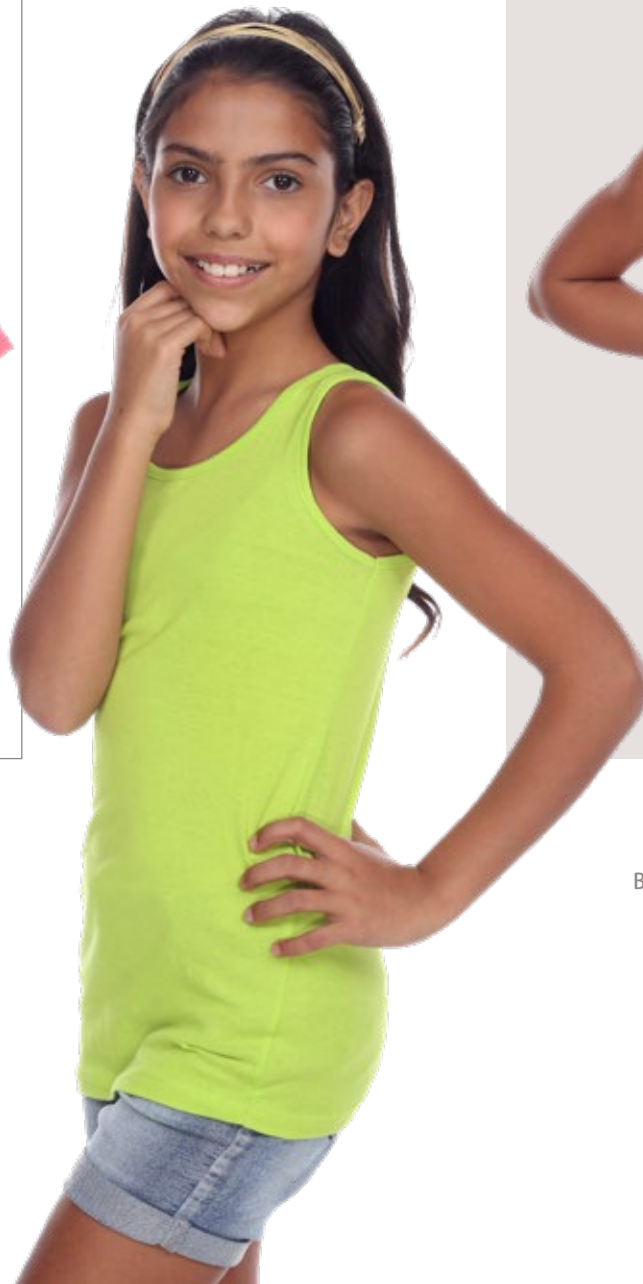
9018 | **NEW** Girls Elastic Shirred Sleeve Round Neck Tee
60% COTTON 40% POLYESTER JERSEY 45S, 3.5OZ / 120G - XS-L
Light Blue, Rose, Spring Mint, White.





9019
NEW Girls Ruffle Sleeve Round Neck Tee
 60% COTTON 40% POLYESTER JERSEY 45S, 3.5OZ / 120G - XS-L
 Light Blue, Rose, Spring Mint, White.

9000
 Girls Long Body Jersey Tank
 100% COTTON JERSEY 40S, 3.8OZ / 130G - XS-L
 Black, Dazzling Blue, Fuchsia, Lime, Papaya, White.



9004
 Girls Raceback Slub Tank
 100% COTTON SLUB JERSEY 40S, 4.1OZ / 140G - XS-L
 Black, Fuchsia, Lime, Mint Gum, Poppy, Purple, Sea Foam, White.





9005
 Girls Cuffed Hi-Lo Tank
 100% COTTON JERSEY 40S, 3.8OZ / 130G - XS-L
 Fuchsia, Lime, Papaya, Purple, Sea Foam.



9007
 Girls Curve Hem Flowy Tank
 100% COTTON SLUB JERSEY 40S, 4.1OZ / 140G - XS-L
 Black, Fuchsia, Lime, Orchid Bloom, Purple, Sea Foam, White.

TANK/SLEEVELESS

9008

Girls Tank Dress

100% COTTON JERSEY 40S, 3.8OZ / 130G - XS-L
 Black, Dazzling Blue, Fuchsia, Lime, Papaya, White.
 *Tear Away Label.





9013

Girls Tied Racerback Ruffle Tank

60% COTTON / 40% POLYESTER JERSEY

45S, 3.5OZ / 120G - XS-L

Orchid Bloom, Peach Blush, Sea Breeze, Spring Mint, Very Berry, White.

*Tear Away Label



9014

Girls Flutter Sleeve Tank

60% COTTON / 40% POLYESTER JERSEY

45S, 3.5OZ / 120G - XS-L

Orchid Bloom, Peach Blush, Sea Breeze, Spring Mint, Very Berry, White.

*Tear Away Label



9207

Girls Tri Blend Contrast Racerback

50% POLYESTER / 25% COTTON / 25% RAYON JERSEY 32S, 4.2OZ / 145G - XS-L

Pink, Purple, Turquoise, White.

*Black Contrast Binding





1000G

Girls Cap Sleeve Crew Neck Tee

100% COTTON JERSEY 40S, 3.8OZ / 130G - XS-L

Black, Dazzling Blue, Fuchsia, Lime, Mint Gum, Papaya, Purple, Sea Foam, White.



3905G

Girls Short Sleeve Dolman With Curve Hem

100% COTTON JERSEY 40S, 3.8OZ / 130G - XS-L

Fuchsia, Lime, Papaya, Purple, Sea Foam, White.

9011

Girls Contrast Sleeve Crew Tee

100% COTTON SLUB JERSEY 40S, 4.1OZ / 140G - XS-L

Light Blue/Sea Foam, Light Pink/Fuchsia, Orchid Bloom/Purple, Poppy/Fuchsia.

*Tear Away Label



SHORT SLEEVE

9012

Girls Puff Sleeve Crew Tee

100% COTTON SLUB JERSEY 40S, 4.1OZ / 140G - XS-L

Fuchsia, Light Pink, Orchid Bloom, Poppy, Purple, Sea Foam, White.

*Tear Away Label



9015

Girls Tied Front Pocket Tee

60% COTTON / 40% POLYESTER JERSEY 45S, 3.5OZ / 120G - XS-L

Orchid Bloom, Peach Blush, Sea Breeze, Spring Mint, Very Berry, White.

*Tear Away Label



9208

Girls Peplum Tee

50% POLYESTER / 25% COTTON / 25% RAYON JERSEY 32S,
4.2OZ / 145G - XS-L

Heather Gray, Pink, Turquoise, White.

*Tear Away Label



9209

Girls Short Sleeve Shark-Bite Tunic

50% POLYESTER / 25% COTTON / 25% RAYON JERSEY 32S,
4.2OZ / 145G - XS-L

Heather Gray, Pink, Turquoise, White.

*Tear Away Label



8908

Girls Cuffed 3/4 Sleeve Pullover

65% COTTON / 35% POLYESTER FRENCH TERRY

32S, 5.3OZ / 180G - XS-L

Blue, Papaya, Peacock, Pink Flambe, Violet.



6054G

Girls Long Sleeve Cotton Slub Raglan

100% COTTON SLUB JERSEY 40S, 4.1OZ / 140G - XS-L

White/Purple, White/Red, White/Royal Blue,
White/Sea Foam.



8902G

Girls French Terry Long Sleeve Zip Hoodie

65% COTTON / 35% POLYESTER FRENCH TERRY

32S, 5.3OZ / 180G - XS-L

Black, Blue, Eggplant, Light Gray, Lime, Papaya, Peacock,
Pink Flambe, Red, Violet.



3/4 SLEEVE

8904G

Girls French Terry Long Sleeve Pullover

65% COTTON / 35% POLYESTER FRENCH TERRY

32S, 5.3OZ / 180G - XS-L

Black, Blue, Eggplant, Light Gray, Lime, Papaya, Peacock, Pink Flambe, Red, Violet.



8906G

Girls French Terry Pullover Hoodie

65% COTTON / 35% POLY FRENCH TERRY 32S, 5.3 OZ / 180G - XS-L

Black, Light Gray, Papaya, Peacock, Pink Flambe.



9206

Girls Tri Blend Hi-Lo Raglan

50% POLYESTER / 25% COTTON / 25% RAYON JERSEY

32S, 4.2OZ / 145G - XS-L

Heather Gray/Purple, Heather Gray/Red, White/Pink, White/Turquoise.

LONG SLEEVE

9607

NEW

Boys Cotton Color Block V Neck Tee

100% COTTON JERSEY 32S, 4.3 OZ / 145G - XS-L

White/Black, White/Burnt Orange, White/Charcoal,
White/Heather Gray, White/True Navy.

PIMA

APPAREL
YOUTH BOYS

9601

Boys Tri Blend Tank

50% POLYESTER / 25% COTTON / 25% RAYON JERSEY 32S, 4.2OZ / 145G - XS-L

Black/Heather Gray, Cardinal/Heather Gray, Heather Gray/Indigo, Indigo/Heather Gray, White/Heather Gray.

**Tear Away Label



TANK/SLEEVELESS

9603

Boys Tri Blend Color-Block Tee

50% POLYESTER / 25% COTTON / 25% RAYON JERSEY 32S, 4.2OZ / 145G - XS-L

Heather Gray/Cardinal, Heather Gray/Indigo, Heather Gray/Military Green, White/Black, White/Heather Gray.

**Tear Away Label



9604

Boys Color-Block Pocket Tee

50% POLYESTER / 25% COTTON / 25% RAYON JERSEY 32S, 4.2OZ / 145G - XS-L

Heather Gray/Black, Heather Gray/Cardinal, Heather Gray/Indigo, Heather Gray/Military Green, Heather Gray/White.

**Tear Away Label

SHORT SLEEVE

9605

Boys Varsity Tee

100% COTTON JERSEY 32S, 4.3OZ / 145G - XS-L

HEATHER GRAY: 80% COTTON / 20% POLYESTER

H Gray/Black

H Gray/Kelly Green

H Gray/ True Navy

White/Black

White/Red

White/Royal Blue

**TEAR AWAY LABEL



9001

Youth Unisex Short Sleeve Tee

100% COTTON JERSEY 32S, 4.3OZ / 145G - XS-L

*HEATHER GRAY: 80% COTTON / 20% POLYESTER

Black, Bright Yellow, Burnt Orange, Charcoal, Cream, Fuchsia, Heather Gray, Light Blue, Light Gray, Light Pink, Lime, Lipstick, Mint Gum, Navy, Natural, Poppy, Purple, Red, Royal Blue, Sea Foam, Turquoise, White.



9002

Youth Unisex Short Sleeve Cotton Slub Crew

100% COTTON SLUB JERSEY 40S, 4.1OZ / 140G - XS-L

Black, Indigo, Lime, Lipstick, Light Pink, Light Gray, Mint Gum, Pink Flambe, Poppy, Purple, Sea Foam, Turquoise, White.

3/4 SLEEVE



9003
 Youth Unisex Tri Blend Short Sleeve
 Crew Neck Tee
 50% POLYESTER / 25% COTTON / 25% RAYON JERSEY
 32S, 4.2OZ / 145G - XS-L
 Black, Cobalt Blue, Heather Gray, Lyons Blue,
 Purple, Red, Turquoise, White.



9602
 Youth Unisex Short Sleeve Ringer Tee
 100% COTTON JERSEY 32S, 4.3OZ / 145G - XS-L
 *HEATHER GRAY: 80% COTTON / 20% POLYESTER
 Heather Gray/Black, Heather Gray/Kelly Green,
 Heather Gray/True Navy, White/Black, White/Red,
 White/Royal Blue.

9606

Youth Unisex Tri-Blend Pullover Hoodie
 50% POLYESTER / 25% COTTON / 25% RAYON JERSEY 32S, 4.2 OZ / 145G - XS-L
 Black, Cardinal, Heather Gray, Military Green, Indigo, Red, White.
 **Tear Away Label



YOUTH UNISEX



50% POLY 50% RAYON
AB SLUB



BLACK



BURGUNDY



MILITARY GREEN



TRUE NAVY

100% COTTON SLUB



LT. YELLOW



POPPY



LT. PINK



FUCHSIA



PINK FLAMBE



RASPBERRY



RED



LIPSTICK
(CARDINAL)



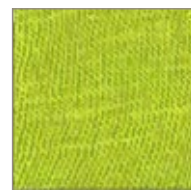
MAUVE



ORCHID
BLOOM



PURPLE



LIME



MINT GUM



ANTIQUE
JADE



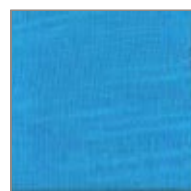
LYONS BLUE



LT. BLUE



SEA FOAM



TURQUOISE



ROYAL BLUE



INDIGO



LT. GRAY



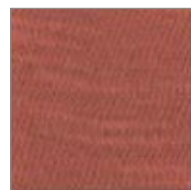
MOONSTRUCK



CREAM



OLIVE



BURNT
ORANGE



CHARCOAL
(WOMEN)



CHARCOAL
(MEN)



BLACK



CHOCOLATE



WHITE

100% COTTON



LT. YELLOW



BRIGHT
YELLOW



SALMON



PAPAYA



RED ORANGE



FUCHSIA



PINK FLAMBE



PASSION PINK



RASPBERRY



RED



LT. PINK



LILAC



PURPLE



DAZZLING
BLUE



ROYAL BLUE



ELECTRIC
BLUE



LT. BLUE



SEA FOAM



TURQUOISE



MINT GUM



PEACOCK



LIME



GREEN FLASH



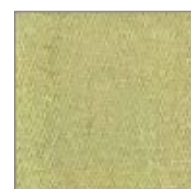
KELLY GREEN



EMERALD



LT. GREEN



THYME



OLIVE

100% COTTON



MILITARY
GREEN



MOTH GREEN



TEAL



DUSTY BLUE



INDIGO



TRUE NAVY



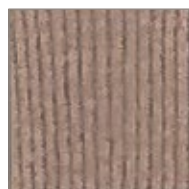
NAVY



BEIGE



CREAM



COCOA



CHOCOLATE



COFFEE



BROWN



BURNT
ORANGE



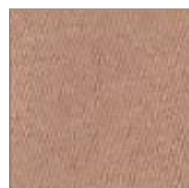
LIPSTICK
(CARDINAL)



MAUVE



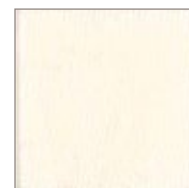
CRANBERRY



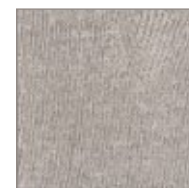
CAMEL



IVORY



NATURAL



LT. GRAY
(WOMEN)



LT. GRAY
(MEN)



CHARCOAL
(WOMEN)



CHARCOAL
(MEN)



BLACK



WHITE



H. GRAY

85% POLY 15% LINEN



ANTIQUE RED



RED



ORANGE
SORBET



ANTIQUE
PINK



RASPBERRY



PLUM



EGGPLANT



PURPLE



MINT



ULTRAMARINE



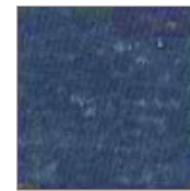
TURQUOISE



BLUEBERRY



NAUTICAL
BLUE



INDIGO



CREAM



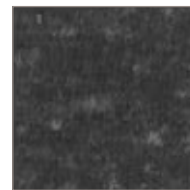
TOFFEE



VINTAGE BLACK



CHARCOAL



BLACK

50% RAYON (FROM BAMBOO) 40% COTTON 10% SOYBEAN



PAPAYA



PARADISE
BERRY



PINK FLAMBE



LIME



MINT GUM



PEACOCK



DAZZLING
BLUE



WHITE



MOONSTONE



BLACK

60% COTTON 40% POLYESTER BLEND



PEACH BLUSH



ROSE
(DK. PINK)



LT. PINK



RED



SPRING MINT



ANTIQUE
JADE



SEA BREEZE



DAZZLING
BLUE



VERY BERRY



ORCHID
BLOOM



LT. BLUE
(WOMEN)



LT. BLUE
(MEN)



INDIGO



NAVY



OLIVE



SAGE



CREAM



TAN



LT. BROWN



BURNT
ORANGE



ESPRESSO



SILVER



ASH



CHARCOAL



WHITE



BLACK



BRIGHT
YELLOW



SEA FOAM

NEW COLORS 2019

50% POLY 25% COTTON 25% RAYON TRI BLEND



PINK



RED



CARDINAL



CRANBERRY



PURPLE



COBALT BLUE



TURQUOISE



LYONS BLUE



INDIGO



NAVY



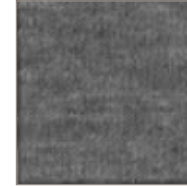
MILITARY GREEN



EMERALD



WHITE



HEATHER



BLACK

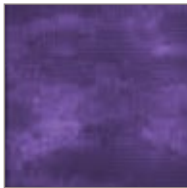


CINNAMON

65% POLY 35% COTTON BURNOUT



BRIGHT PINK



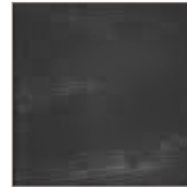
DEEP PURPLE



AQUA

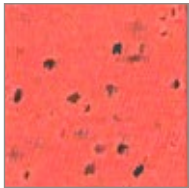


WHITE



BLACK

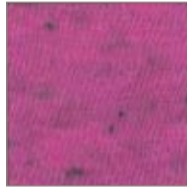
96% COTTON 4% POLY BLACK NUB



PAPAYA



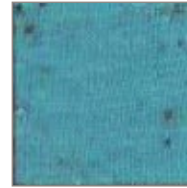
PINK



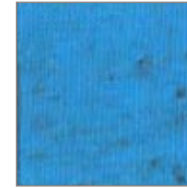
VERY BERRY



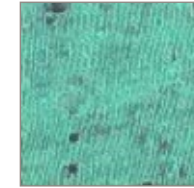
RED



ARTIC BLUE



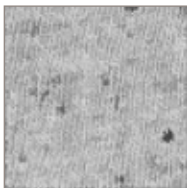
SPRING BLUE



MINT GUM



LIME



MOONSTONE

65% POLY 35% VISCOSE



RED



PINK



PEACH BLUSH



MINT



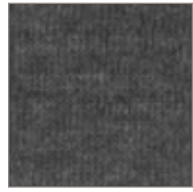
SEA BREEZE



PRINCESS
BLUE



WHITE



HEATHER
CHARCOAL



H. GRAY



BLACK

65% POLY 35% RAYON SLUB



PAPAYA



PARADISE BERRY



PINK FLAMBE



DAZZLING BLUE



PEACOCK



MINT GUM



WHITE



BLACK

65% COTTON 35% POLY FRENCH TERRY



PAPAYA



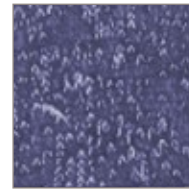
PINK FLAMBE



RED



VIOLET



EGGPLANT



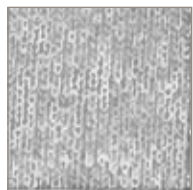
BLUE



PEACOCK



LIME



LT. GRAY



BLACK

INDEX

Adult Unisex

- 3606 - Tri Blend Long Sleeve Front Pocket Pullover “Weekend” Hoodie: pg. 67
- 3752 - Poly Rayon Slub Short Sleeve Crew Neck ‘MILLENNIUM’ Tee: pg. 66
- 3755 - Modal Blend Short Sleeve Crew Neck ‘CITY’ Tee: pg. 66
- 4004 - Cotton Short Sleeve Crew Neck Rolled Cuff Tee: pg. 67

Women - Young Contemporary Fit

- 1000 - The Luxury Cap Sleeve Crew: pg. 19
- 1001 - Scoop Neck Curve Hem Tee: pg. 19
- 1003 - Short Sleeve Deep V Tee: pg. 19
- 1004 - Short Sleeve Regular V-Neck Tee: pg. 20
- 1008 - Short Sleeve Dorm Shirt: pg. 20
- 1100 - Long Sleeve Crew Neck Tee: pg. 37
- 1101 - Kimono Long Sleeve Hi Lo Body Tee: pg. 37
- 1103 - Long Sleeve “Tear Drop” V-Neck Tee: pg. 37
- 1201 - Cotton Nub Scoop Neck Curve Hem Tee: pg. 21
- 1202 - Cotton Nub Short Sleeve Crop Box Tee: pg. 21
- 1203 - Nub Jersey Short Sleeve V-Neck Tee: pg. 21
- 1206 - Cotton Nub Crop Tank: pg. 12
- 1207 - Cotton Nub Curve Hem Ringer Tank: pg. 12
- 2000 - 2 x 1 Rib Tank Top: pg. 13
- 2001 - Drop Needle Rib Racerback Tank: pg. 13
- 2002 - Fine Jersey Tank: pg. 13
- 2003 - Slub Racerback Tank: pg. 14
- 2004 - Poly Linen Racerback Tank: pg. 14
- 2006 - Rayon from Bamboo Blend Crop Tank: pg. 14
- 2007 - Scoop Neck Curve Hem Tank: pg. 15
- 2008 - Cover Up Tank Dress: pg. 15
- 2009 - Poly Linen Muscle Tank **Adding New Colors: pg. 15**
- 2010 - Halter Top: pg. 16
- 2011 - Vented Muscle Tank **Adding New Colors: pg. 16**
- 2012 - WORKOUT Muscle Tank: pg. 16
- 3000 - Cap Sleeve Blended Crew Neck Tee: pg. 22
- 3001 - Cap Sleeve Blended Ringer Tee: pg. 22
- 3002 - Scoop Neck Short Sleeve Boxy Straight Tee: pg. 22
- 3100 - Long Sleeve Blended Crew Neck Tee: pg. 38
- 3101 - Cotton Poly Body with Black Thermal Long Sleeve: pg. 38
- 3102 - Cotton Poly Contrast Raglan Long Sleeve Pullover: pg. 38
- 3200 - Tri Blend Short Sleeve Crew Neck Tee **Adding New Colors: pg. 23**
- 3203 - Tri Blend Short Sleeve Deep V Neck Tee: pg. 23
- 3204 - Tri Blend Split V 3/4 Sleeve Raglan: pg. 34
- 3205 - Tri Blend Hi-Lo Tunic: pg. 34
- 3206 - Tri Blend 3/4 Contrast Sleeve Raglan: pg. 35
- 3207 - Tri Blend Essential Hi-Lo Pocket Tee: pg. 23
- 3208 - Tri Blend Sleeveless Hoodie: pg. 17

- 3210 - Tri Blend Lounge Pant: pg. 44
- 3211 - Tri Blend Jogger: pg. 44
- 3216 - Rolled Cuff Short Sleeve Boxy Tee: pg. 11
- 3217 - Relaxed Mock Neck Long Sleeve Pullover: pg. 10
- 3300 - Relaxed Modal Blend Tee: pg. 24
- 3301 - Racerback Flowy Tank: pg. 17
- 3302 - Shark-Bite Tank: pg. 17
- 3303 - Relaxed Modal Blend V-neck Tee: pg. 24
- 3304 - Modal Blend Tank: pg. 17
- 3305 - Hi-Lo Shirred Back Tee: pg. 24
- 3306 - Drop Shoulder Tee: pg. 25
- 3307 - Modern Cap Sleeve Curve Hem Tee: pg. 25
- 3308 - Short Sleeve Vented Tee: pg. 26
- 3311 - Tank Top with Slit Back: pg. 11
- 3400 - Poly Rayon Slub Scoop Neck Tee: pg. 26
- 3401 - Poly Rayon Slub Boxy Crop Tee: pg. 26
- 3454 - 3/4 Sleeve Curve Hem Raglan: pg. 35
- 3500 - Burnout Crew Neck Tee: pg. 27
- 3503 - Burnout V-Neck Tee: pg. 27
- 3800 - Poly Linen Short Sleeve Crew Neck: pg. 28
- 3803 - Poly Linen Short Sleeve Deep V-Neck Tee: pg. 28
- 3804 - Poly Linen Long Sleeve Crew Neck Tee: pg. 39
- 3900 - Bamboo Blend Short Sleeve Crew Neck Tee: pg. 29
- 3903 - Bamboo Blend Short Sleeve Deep V Neck Tee: pg. 29
- 3904 - Bamboo Blend Crop Long Sleeve Pullover: pg. 39
- 3905 - Bamboo Blend Curve Hem Dolman: pg. 30
- 4000 - Short Sleeve Boyfriend Tee: pg. 30
- 4002 - Essential Loose Body Tee: pg. 30
- 4160 - Long Sleeve Jersey 2fer Thermal: pg. 39
- 5001 - Cap Sleeve Scoop Neck Tee: pg. 31
- 5003 - Cap Sleeve V-neck Tee: pg. 31
- 5101 - Long Sleeve Boat Neck Tee: pg. 40
- 6050 - Cap Sleeve Slub Tee: pg. 32
- 6051 - Short Sleeve Slub Henley Hoodie: pg. 32
- 6052 - Short Sleeve Slub Polo: pg. 33
- 6053 - Cap Sleeve Cotton Slub V-Neck Tee: pg. 33
- 6054 - Boat Neck 3/4 Sleeve Slub Raglan: pg. 35
- 6100 - Long Sleeve (Waffle) Thermal Crew Neck: pg. 40
- 6101 - Long Sleeve (Waffle) Thermal Hoodie: pg. 40
- 6102 - Tri Blend Hoodie Pullover: pg. 41
- 6150 - Long Sleeve Slub Crew Neck Tee: pg. 41
- 6152 - Long Sleeve Zip Front Slub Hoodie: pg. 41
- 6153 - Poly Linen Long Sleeve Zip Hoodie: pg. 42
- 6153C - 2-Tone Zip Front Pocket Hoodie Jacket: pg. 42
- 8901 - French Terry Short Sleeve Zip Hoodie: pg. 33
- 8902 - French Terry Long Sleeve Zip Hoodie: pg. 42
- 8904 - French Terry Long Sleeve Pullover: pg. 43
- 8905 - French Terry Tunic Hoodie: pg. 43
- 8906 - French Terry Boxy Pullover Hoodie **Adding New Colors: pg. 43**
- 8911 - Hooded Crop Long Sleeve Sweatshirt: pg. 11

Women - Missy Elegant Fit

7100 - Ladies Jersey Short Sleeve Scoop Neck Tee: pg. 49
7102 - Ladies Basic Jersey Tank: pg. 47
7104 - Ladies Regular V-Neck Short Sleeve Tee: pg. 49
7110 - Ladies Long Sleeve Crew Neck Tee With Side Vents: pg. 54
7154 - Ladies Poly Rayon Slub Long Sleeve Zip Hoodie: pg. 54
7204 - Ladies Tri Blend Split V 3/4 Sleeve Raglan: pg. 53
7300 - Ladies Short Sleeve Shark-Bite Tee: pg. 49
7301 - Ladies Scoop Back Dolman: pg. 50
7303 - Ladies V-Neck Dolman 3/4 Sleeve w/ Shark-Bite Hem: pg. 53
7304 - Ladies Modal Blend Tank: pg. 47
7305 - Ladies Poly Linen Tank: pg. 48
7306 - Ladies Modal Blend Dolman Short Sleeve Tee: pg. 50
7307 - Ladies Tri Blend Scoop Curve Hem Tank: pg. 48
7308 - Ladies Hi Lo 3/4 Sleeve Flowy Tunic **Adding New Colors: pg. 53**
7311 - Ladies Pleated Back Tank Top: pg. 46
7312 - Ladies Casual Open V Back Tank Top: pg. 46
7313 - Ladies Casual Open V Back Short Sleeve Tee: pg. 46
7400 - Ladies Poly Rayon Slub Short Sleeve Scoop Neck: pg. 51
7402 - Ladies Poly Rayon Slub Tank: pg. 48
7454 - Ladies 3/4 Sleeve Curve Hem Raglan: pg. 53
7610 - Ladies Long Sleeve Curved Hem Crew Neck Features Cuff w/ Thumb hole: pg. 54
7805 - Ladies Poly Linen Dolman Short Sleeve Scoop Neck: pg. 51
7892 - Ladies French Terry Long Sleeve Zip Hoodie: pg. 55
7904 - Ladies Bamboo Blend Long Sleeve Pullover: pg. 55

Mens

2005 - Men's Jersey Tank: pg. 57
2205 - Men's Nub Jersey Ringer Tank: pg. 57
3600 - Men's Short Sleeve Blended Crew Neck Tee: pg. 58
3601 - Men's Short Sleeve Blended Crew Neck Raglan: pg. 58
3602 - Men's Short Sleeve Blended Crew Neck Ringer: pg. 59
3700 - Men's Poly Linen Blended Crew Neck Tee: pg. 59
3701 - Men's Long Sleeve Blended Crew Neck Raglan: pg. 62
3702 - Men's Poly Linen Blended V-Neck Tee: pg. 59
3750 - Men's Tri Blend Crew Neck Tee **Adding New Colors: pg. 60**
3751 - Men's Tri Blend V-Neck Tee: pg. 60
3758 - Men's Tri Blend Sleeveless Hoodie: pg. 57
4600 - Men's Slim Fit Short Sleeve Crew Neck Tee: pg. 60
4601 - Men's Slim Fit Short Sleeve V-Neck Tee: pg. 61
4700 - Men's Slim Fit Long Sleeve Crew Neck Tee: pg. 62
4701 - Men's Slim Fit Long Sleeve V-Neck Tee: pg. 63
4760 - Men's Long Sleeve Jersey 2Fer Thermal Tee: pg. 63
6550 - Men's Short Sleeve Crew Neck Slub Tee: pg. 61
6551 - Men's Short Sleeve Slub Polo: pg. 61
6562 - Men's Long sleeve Slub Jersey V-Cut Crew: pg. 63
6570 - Men's 3/4 Sleeve Slub Raglan Crew: pg. 62
6600 - Men's Long Sleeve (Waffle) Crew Neck Thermal: pg. 64
8705 - Men's Long Sleeve Slub Pullover Hoodie: pg. 64
8752 - Men's Cotton Slub Long Sleeve Zip Hoodie: pg. 64

Youth / Youth Unisex

9001 - Youth Short Sleeve Unisex Tee: pg. 79
9002 - Youth Cotton Slub Unisex Crew: pg. 79
9003 - Youth Tri Blend Short Sleeve Unisex Crew: pg. 80
9602 - Youth Short Sleeve Ringer Tee: pg. 80
9606 - Youth Tri Blend Pullover Hoodie: pg. 80

Girls

1000G - Girls Cap Sleeve Crew Neck Tee: pg. 73
3905G - Girls Short Sleeve Dolman with Curve Hem: pg. 73
6054G - Girls Cotton Slub LS Raglan: pg. 76
8902G - Girls French Terry Long Sleeve Zip Hoodie: pg. 76
8904G - Girls French Terry Long Sleeve Pullover: pg. 77
8906G - Girls Raglan/Long Sleeve Pullover Hoodie: pg. 77
8908 - Girls Cuffed 3/4 Sleeve Pullover: pg. 76
9000 - Girls Long Body Jersey Tank: pg. 70
9004 - Girls Racerback Cotton Slub Tank: pg. 70
9005 - Girls Cuffed Hi-Lo Tank: pg. 71
9007 - Girls Curve Hem Flowy Tank: pg. 71
9008 - Girls Tank Dress: pg. 71
9011 - Girls Contrast Sleeve Crew Tee: pg. 73
9012 - Girls Puff Sleeve Crew Tee: pg. 74
9013 - Girls Tied Racerback Ruffle Tank: pg. 72
9014 - Girls Flutter Sleeve Tank: pg. 72
9015 - Girls Tied Front Pocket Tee: pg. 74
9016 - Girls Curved Hem Tank Top: pg. 69
9017 - Girls Rolled Cuff Short Sleeve V Neck Tee: pg. 69
9018 - Girls Elastic Shirred Sleeve Round Neck Tee: pg. 69
9019 - Girls Ruffle Sleeve Round Neck Tee: pg. 70
9206 - Girls Tri Blend Hi-Lo Raglan: pg. 77
9207 - Girls Tri Blend Contrast Racerback: pg. 72
9208 - Girls Short Sleeve Peplum Tee: pg. 75
9209 - Girls Short Sleeve Shark-Bite Tunic: pg. 75

Boys

9601 - Boys Tri Blend Tank: pg. 79
9603 - Boys Tri Blend Short Sleeve Tee: pg. 79
9604 - Boys Color Block Pocket Tee: pg. 79
9605 - Boys Baseball Tee: pg. 79
9607 - Boys Cotton Color Block V Neck Tee: pg. 78



PIMA
APPAREL

SIZING CHARTS

SIZING SPECIFICATIONS : JUNIOR

1000, 3001

Specs	S	M	L	XL	XXL
HPS LENGTH	25 3/8	26	26 5/8	27 1/4	27 7/8
CHEST WIDTH	15	16	17	18 1/2	20

1004, 1203, 4000

Specs	S	M	L	XL	XXL
HPS LENGTH	24 7/8	25 1/2	26 1/8	26 3/4	27 3/8
CHEST WIDTH	15 1/2	16 1/2	17 1/2	19	20 1/2

1101

Specs	S	M	L	XL	XXL
FRONT HPS LENGTH	25	25 1/2	26	27 1/2	29
BACK HPS LENGTH	27 3/4	28 1/4	28 3/4	30 1/4	31 3/4
CHEST WIDTH	19	20	21	22 1/2	24

1206, 2006

Specs	S	M	L	XL	XXL
HPS LENGTH	18 1/2	19 1/2	20 1/2	21 1/2	22 1/2
CHEST WIDTH	15	16	17	18	19

2002

Specs	S	M	L	XL	XXL
HPS LENGTH	26 3/8	27	27 5/8	28 1/4	28 7/8
CHEST WIDTH	14	15	16	17 1/2	19

2009

Specs	S	M	L	XL	XXL
HPS LENGTH	24	24 1/2	25	25 1/2	26
CHEST WIDTH	16 1/2	17 1/2	18 1/2	20	21 1/2

2012

Specs	S	M	L	XL	XXL
HPS LENGTH	21 1/2	22	22 1/2	23	23 1/2
CHEST WIDTH	18 3/4	19 3/4	20 3/4	22 1/4	23 3/4

3102

Specs	S	M	L	XL	XXL
HPS LENGTH	24 1/2	25	25 1/2	26	26 1/2
CHEST WIDTH	20 1/2	21 1/2	22 1/2	24	25 1/2

1001, 1201, 1207, 2007

Specs	S	M	L	XL	XXL
HPS LENGTH	25	25 1/2	26	26 1/2	27
CHEST WIDTH	16	17	18	19 1/2	21

1008

Specs	S	M	L	XL	XXL
FRONT HPS LENGTH	32 1/2	33 1/2	34 1/2	35 1/2	36 1/2
BACK HPS LENGTH	33 1/2	34 1/2	35 1/2	36 1/2	37 1/2
CHEST WIDTH	19	20	21	22 1/2	24

1103, 5003, 6053

Specs	S	M	L	XL	XXL
HPS LENGTH	25 3/8	26	26 5/8	27 1/4	27 7/8
CHEST WIDTH	14 3/4	15 3/4	16 3/4	18 1/4	19 3/4

2000

Specs	S	M	L	XL	XXL
HPS LENGTH	26 1/2	27	27 1/2	28	28 1/2
CHEST WIDTH	10 1/2	11 1/2	12 1/2	14	15 1/2

2003, 2004

Specs	S	M	L	XL	XXL
HPS LENGTH	26 1/2	27 1/2	28 1/2	29 1/2	30 1/2
CHEST WIDTH	13 1/2	14 1/2	15 1/2	16 1/2	17 1/2

2010

Specs	S	M	L	XL	XXL
HPS LENGTH	17 1/2	18	18 1/2	19	19 1/2
CHEST WIDTH	14	15	16	17 1/2	19

3002

Specs	S	M	L	XL	XXL
HPS LENGTH	27	27 1/2	28	29 1/2	31
CHEST WIDTH	17	18	19	20 1/2	22

3204

Specs	S	M	L	XL	XXL
FRONT HPS LENGTH	25 1/2	26	26 1/2	27 1/4	28
BACK HPS LENGTH	26 1/2	27	27 1/2	28 1/4	29
CHEST WIDTH	16	17	18	19 1/2	21

1003 3200,3203,3400,3500,3503,3800, 3803, 3900, 3903

Specs	S	M	L	XL	XXL
HPS LENGTH	26 1/2	27	27 1/2	28	28 1/2
CHEST WIDTH	15 1/2	16 1/2	17 1/2	18 1/2	19 3/4

1100, 3000, 3100, 3804

Specs	S	M	L	XL	XXL
HPS LENGTH	25 3/8	26	26 5/8	27 1/4	27 7/8
CHEST WIDTH	15 1/2	16 1/2	17 1/2	19	20 1/2

1202, 3401

Specs	S	M	L	XL	XXL
HPS LENGTH	20 1/2	21	21 1/2	22	22 1/2
CHEST WIDTH	16 1/2	17 1/2	18 1/2	20	21 1/2

2001

Specs	S	M	L	XL	XXL
HPS LENGTH	26	27	27 1/2	28	28 1/2
CHEST WIDTH	13	14	15 1/2	17	18 1/2

2008

Specs	S	M	L	XL	XXL
HPS LENGTH	30	31 1/2	33	34 1/2	36
CHEST WIDTH	14	15	16	17 1/2	19

2011

Specs	S	M	L	XL	XXL
HPS LENGTH	27 1/2	28	28 1/2	29	29 1/2
CHEST WIDTH	17	18	19	20 1/2	22

3101

Specs	S	M	L	XL	XXL
HPS LENGTH	26 1/4	26 3/4	27 1/4	27 3/4	28 1/4
CHEST WIDTH	15 1/2	16 1/2	17 1/2	19	20 1/2

3205

Specs	S	M	L	XL	XXL
FRONT HPS LENGTH	25 1/2	26	26 1/2	27	27 1/2
BACK HPS LENGTH	28	28 1/2	29	29 1/2	30
CHEST WIDTH	24 1/2	25 1/2	26 1/2	28	29 1/2

SIZING CHARTS

3206

Specs	S	M	L	XL	XXL
HPS LENGTH	27	27 1/2	28	28 1/2	29
CHEST WIDTH	16 1/2	17 1/2	18 1/2	20	21 1/2

3210 Pant

Specs	S	M	L	XL	XXL
INSEAM LENGTH	29 1/2	30	30 1/2	31	31 1/2
WAIST WIDTH	15 1/2	16 1/2	17 1/2	18 1/2	19 1/2

3217

Specs	S	M	L	XL	XXL
HPS LENGTH	21 1/2	22	22 1/2	23	23 1/2
CHEST WIDTH	19 1/2	20 1/2	21 1/2	23	24 1/2

3302

Specs	S	M	L	XL	XXL
FRONT HPS LENGTH	25	25 1/2	26	26 1/2	27
BACK HPS LENGTH	26	26 1/2	27	27 1/2	28
CHEST WIDTH	15 1/2	16 1/2	17 1/2	19	20 1/2

3306

Specs	S	M	L	XL	XXL
HPS LENGTH	24 1/2	25	25 1/2	26	26 1/2
CHEST WIDTH	24	25	26	27	28

3311

Specs	S	M	L	XL	XXL
HPS LENGTH	23 1/2	24	24 1/2	25	25 1/2
CHEST WIDTH	16	17	18	19 1/2	21

3905

Specs	S	M	L	XL	XXL
HPS LENGTH	25 1/2	26	26 1/2	27	27 1/2
CHEST WIDTH	17	18	19	20	21

3207

Specs	S	M	L	XL	XXL
FRONT HPS LENGTH	26 1/2	27 1/2	28 1/2	30	31 1/2
BACK HPS LENGTH	28	29	30	31 1/2	33
CHEST WIDTH	17	18	19	20 1/2	22

3211 Jogger

Specs	S	M	L	XL	XXL
INSEAM LENGTH	28 1/2	29	29 1/2	30	30 1/2
WAIST WIDTH	15 1/2	16 1/2	17 1/2	18 1/2	19 1/2

3300, 3303

Specs	S	M	L	XL	XXL
FRONT HPS LENGTH	25	25 1/2	26	26 1/2	27
BACK HPS LENGTH	26 1/2	27	27 1/2	28	28 1/2
CHEST WIDTH	19 1/2	20 1/2	21 1/2	22 1/2	23 1/2

3304

Specs	S	M	L	XL	XXL
HPS LENGTH	25	25 1/2	26	26 1/2	27
CHEST WIDTH	17	18	19	20 1/2	22

3307

Specs	S	M	L	XL	XXL
FRONT HPS LENGTH	24 1/2	25	25 1/2	26	26 1/2
BACK HPS LENGTH	27	27 1/2	28	28 1/2	29
CHEST WIDTH	19	20	21	22	23

3454

Specs	S	M	L	XL	XXL
HPS LENGTH	26	26 1/2	27	27 1/2	28
CHEST WIDTH	16	17	18	19 1/2	21

4002

Specs	S	M	L	XL	XXL
HPS LENGTH	26	27	28	29	30
CHEST WIDTH	18 1/2	19 1/2	20 1/2	22	23 1/2

3208

Specs	S	M	L	XL	XXL
HPS LENGTH	27 5/8	28 1/8	28 5/8	29 1/8	29 5/8
CHEST WIDTH	16	17	18	19 1/2	21

3216

Specs	S	M	L	XL	XXL
HPS LENGTH	21 1/2	22	22 1/2	23	23 1/2
CHEST WIDTH	20 1/4	21 1/4	22 1/4	23 3/4	25 1/4

3301

Specs	S	M	L	XL	XXL
HPS LENGTH	26	26 1/2	27	27 1/2	28
CHEST WIDTH	16	17	18 1/2	20	21 1/2

3305

Specs	S	M	L	XL	XXL
FRONT HPS LENGTH	23	23 1/2	24	24 1/2	25
BACK HPS LENGTH	26	26 1/2	27	27 1/2	28
CHEST WIDTH	18	19	20	21	22

3308

Specs	S	M	L	XL	XXL
HPS LENGTH	29 1/2	30	30 1/2	31	31 1/2
CHEST WIDTH	17	18	19	20 1/2	22

3904

Specs	S	M	L	XL	XXL
HPS LENGTH	18 7/8	19 1/2	20 1/8	20 3/4	21 3/8
CHEST WIDTH	20 1/2	21 1/2	22 1/2	24	25 1/2

4160, 6100, 6150

Specs	S	M	L	XL	XXL
HPS LENGTH	25 3/8	26	26 5/8	27 1/4	27 7/8
CHEST WIDTH	14 1/2	15 1/2	16 1/2	18	19 1/2

SIZING CHARTS

5001, 5101

Specs	S	M	L	XL	XXL
HPS LENGTH	25 3/8	26	26 5/8	27 1/4	27 7/8
CHEST WIDTH	14	15	16	17 1/2	19

6050

Specs	S	M	L	XL	XXL
HPS LENGTH	25 3/8	26	26 5/8	27 1/4	27 7/8
CHEST WIDTH	14 1/4	15 1/4	16 1/4	17 3/4	19 1/4

6051

Specs	S	M	L	XL	XXL
HPS LENGTH	25 7/8	26 1/2	27 1/8	27 3/4	28 3/8
CHEST WIDTH	15 1/2	16 1/2	17 1/2	19	20 1/2

6052

Specs	S	M	L	XL	XXL
HPS LENGTH	24 1/2	25	25 1/2	26	26 1/2
CHEST WIDTH	16 1/2	17 1/2	18 1/2	19 3/4	21

6054

Specs	S	M	L	XL	XXL
HPS LENGTH	26	26 1/2	27	27 1/2	28
CHEST WIDTH	14 1/2	15 1/2	16 1/2	18	19 1/2

6101

Specs	S	M	L	XL	XXL
HPS LENGTH	26 1/2	27 1/8	27 3/4	28 3/8	29
CHEST WIDTH	14	15	16	17 1/2	19

6102

Specs	S	M	L	XL	XXL
HPS LENGTH	26 1/2	27 1/8	27 3/4	28 3/8	29
CHEST WIDTH	14 1/4	15 1/4	16 1/4	17 3/4	19 1/4

6152, 6153, 6153C, 8902

Specs	S	M	L	XL	XXL
HPS LENGTH	25 3/8	26	26 5/8	27 1/4	27 7/8
CHEST WIDTH	18 1/2	19 1/2	20 1/2	22	23 1/2

8901

Specs	S	M	L	XL	XXL
HPS LENGTH	25	25 1/2	26	26 1/2	27
CHEST WIDTH	18 1/2	19 1/2	21	22 1/2	24

8904

Specs	S	M	L	XL	XXL
HPS LENGTH	21 1/2	22	22 1/2	23	23 1/2
CHEST WIDTH	21	22	23	24 1/2	26

8905

Specs	S	M	L	XL	XXL
HPS LENGTH	29 3/4	30 1/4	30 3/4	32 1/4	33 3/4
CHEST WIDTH	19	20	21	22 1/2	24

8906

Specs	S	M	L	XL	XXL
HPS LENGTH	23 1/2	24	24 1/2	25 1/4	26
CHEST WIDTH	20 1/2	21 1/2	22 1/2	24	25 1/2

8911

Specs	S	M	L	XL	XXL
HPS LENGTH	17 1/2	18	18 1/2	19	19 1/2
CHEST WIDTH	16	17	18	19 1/2	21

SIZING SPECIFICATIONS : LADIES

7100, 7400

Specs	S	M	L	XL	XXL
HPS LENGTH	26 1/2	27	27 1/2	28	28 1/2
CHEST WIDTH	18	19	20	21 1/2	23

7102, 7402

Specs	S	M	L	XL	XXL
HPS LENGTH	27	27 1/2	28	28 1/2	29
CHEST WIDTH	17	18	19	20 1/2	22

7104, 7305

Specs	S	M	L	XL	XXL
HPS LENGTH	26	26 1/2	27	27 3/4	28 1/2
CHEST WIDTH	17 1/2	18 1/2	19 1/2	21	22 1/2

7110

Specs	S	M	L	XL	XXL
HPS LENGTH	26	27	28	29	30
CHEST WIDTH	18 1/2	19 1/2	20 1/2	22	23 1/2

7154

Specs	S	M	L	XL	XXL
HPS LENGTH	26 3/8	27	27 5/8	28 1/4	28 7/8
CHEST WIDTH	21	22	23	24 1/2	26

7204

Specs	S	M	L	XL	XXL
FRONT HPS LENGTH	26	26 1/2	27	27 1/2	28
BACK HPS LENGTH	27	27 1/2	28	28 1/2	29
CHEST WIDTH	18	19	20	21 1/2	23

SIZING CHARTS

7300, 7304, 7307

Specs	S	M	L	XL	XXL
HPS LENGTH	26	26 1/2	27	27 1/2	28
CHEST WIDTH	17 1/2	18 1/2	19 1/2	21	22 1/2

7306, 7805

Specs	S	M	L	XL	XXL
HPS LENGTH	27	27 1/2	28	28 1/2	29
CHEST WIDTH	19	20	21	22	23

7312

Specs	S	M	L	XL	XXL
HPS LENGTH	25	25 1/2	26	26 1/2	27
CHEST WIDTH	17	18	19	20 1/2	22

7892

Specs	S	M	L	XL	XXL
HPS LENGTH	26 3/8	27	27 5/8	28 1/4	28 7/8
CHEST WIDTH	21 1/2	22 1/2	23 1/2	25	26 1/2

7301, 7313

Specs	S	M	L	XL	XXL
HPS LENGTH	26	26 1/2	27	27 1/2	28
CHEST WIDTH	18	19	20	21 1/2	23

7308

Specs	S	M	L	XL	XXL
FRONT HPS LENGTH	26 1/2	27	27 1/2	28	28 1/2
BACK HPS LENGTH	30 1/2	31	31 1/2	32	32 1/2
CHEST WIDTH	18	19	20	21 1/2	23

7454

Specs	S	M	L	XL	XXL
HPS LENGTH	27	27 1/2	28	28 1/2	29
CHEST WIDTH	18	19	20	21 1/2	23

7904

Specs	S	M	L	XL	XXL
HPS LENGTH	26	26 1/2	27	27 1/2	28
CHEST WIDTH	21	22	23	24 1/2	26

7303

Specs	S	M	L	XL	XXL
HPS LENGTH	25	25 1/2	26	26 1/2	27
CHEST WIDTH	22 1/2	23 1/2	24 1/2	26	27 1/2

7311

Specs	S	M	L	XL	XXL
HPS LENGTH	24 1/2	25	25 1/2	26	26 1/2
CHEST WIDTH	17 1/2	18 1/2	19 1/2	21	22 1/2

7610

Specs	S	M	L	XL	XXL
FRONT HPS LENGTH	26	26 1/2	27	27 1/2	28
BACK HPS LENGTH	27 3/4	28 1/4	28 3/4	29 1/4	29 3/4
CHEST WIDTH	16 1/4	17 1/4	18 1/4	19 3/4	21 1/4

SIZING SPECIFICATIONS : MENS

2005, 2205

Specs	S	M	L	XL	XXL
HPS LENGTH	28 1/2	29	29 1/2	30	30 1/2
CHEST WIDTH	20	20 3/4	21 1/2	22 1/4	23

3602

Specs	S	M	L	XL	XXL
HPS LENGTH	26	27 1/8	28 1/4	29 3/8	30 1/2
CHEST WIDTH	19	20 1/2	22	23 1/2	25

4700, 4701, 4760, 6550, 6600

Specs	S	M	L	XL	XXL
HPS LENGTH	26 1/4	27 3/8	28 1/2	29 5/8	30 3/4
CHEST WIDTH	18	19	20 1/2	22 1/2	24 1/2

6570

Specs	S	M	L	XL	XXL
HPS LENGTH	28	29	30	31	32 1/2
CHEST WIDTH	18 1/2	19 3/4	21 1/4	23 1/4	25 1/4

3600, 3700, 3750

Specs	S	M	L	XL	XXL
HPS LENGTH	27	28 1/8	29 1/8	30 1/4	31 1/4
CHEST WIDTH	19	20 1/2	22	23 1/2	25

3702, 3751, 4600, 4601

Specs	S	M	L	XL	XXL
HPS LENGTH	27 1/8	28 1/4	29 1/4	30 3/8	31 3/8
CHEST WIDTH	18 1/2	19 3/4	21 1/4	23 1/4	25 1/4

6551

Specs	S	M	L	XL	XXL
HPS LENGTH	26 7/8	28	29 1/8	30 1/4	31 3/8
CHEST WIDTH	20	21	22 1/2	24 1/2	26 1/2

8705

Specs	S	M	L	XL	XXL
HPS LENGTH	26 1/2	27 1/2	28 1/2	29 1/2	30 1/2
CHEST WIDTH	21	22	23 1/2	25	27

3601, 3701

Specs	S	M	L	XL	XXL
HPS LENGTH	27	28 1/8	29 1/4	30 3/8	31 1/2
CHEST WIDTH	18	19 1/2	21	22 1/2	24

3758

Specs	S	M	L	XL	XXL
HPS LENGTH	26 1/2	27 1/2	28 1/2	29 1/2	30 1/2
CHEST WIDTH	21 1/2	22 1/2	23 1/2	25	26 1/2

6562

Specs	S	M	L	XL	XXL
HPS LENGTH	26 7/8	28	29 1/8	30 1/4	31 3/8
CHEST WIDTH	18 3/4	19 3/4	21 1/4	23 1/4	25 1/4

8752

Specs	S	M	L	XL	XXL
HPS LENGTH	25 3/8	26 1/2	27 5/8	28 3/4	29 7/8
CHEST WIDTH	21	22	23 1/2	25	26 1/2

SIZING CHARTS

SIZING SPECIFICATIONS : ADULT UNISEX

3606

Specs	XS	S	M	L	XL	XXL
HPS LENGTH	26 1/2	27	27 1/2	28	29	30
CHEST WIDTH	20	21	22	23	24 1/2	26 1/2

3752, 3755, 4004

Specs	XS	S	M	L	XL	XXL
HPS LENGTH	26	27	28	29	30	31 1/4
CHEST WIDTH	18	19	20	21 1/2	23	24 1/2

SIZING SPECIFICATIONS:YOUTH/YOUTH UNISEX

9001, 9602

Specs	XS	S	M	L
HPS LENGTH	18	20	22	24
CHEST WIDTH	13	14	15 1/2	17

9002

Specs	XS	S	M	L
HPS LENGTH	19	20 1/4	21 1/2	23 1/2
CHEST WIDTH	12 1/2	13 1/2	14 1/2	16

9003

Specs	XS	S	M	L
HPS LENGTH	18	20	22	24
CHEST WIDTH	13 1/2	15 1/2	16 1/2	17 1/2

9606

Specs	XS	S	M	L
HPS LENGTH	19	21	23	25
CHEST WIDTH	14 1/2	15 1/2	17	18 1/2

SIZING SPECIFICATIONS : GIRLS

1000G

Specs	XS (4-5)	S (6-8)	M (10-12)	L (14-16)
HPS LENGTH	16 1/2	17 1/2	19	20 1/2
CHEST WIDTH	12	13	14	15 1/2

3905G, 8904G

Specs	XS (4-5)	S (6-8)	M (10-12)	L (14-16)
HPS LENGTH	16 1/2	17 1/2	19	20 1/2
CHEST WIDTH	13 1/2	14 1/2	16	17 1/2

6054G

Specs	XS (4-5)	S (6-8)	M (10-12)	L (14-16)
HPS LENGTH	19	20	21 1/4	22 1/2
CHEST WIDTH	12	13	14 1/4	15 1/2

8902G

Specs	XS (4-5)	S (6-8)	M (10-12)	L (14-16)
HPS LENGTH	17	18	19 1/2	21
CHEST WIDTH	14	15	16 1/2	18

8906G

Specs	XS (4-5)	S (6-8)	M (10-12)	L (14-16)
HPS LENGTH	16 1/2	17 1/2	19	20 1/2
CHEST WIDTH	14 1/2	15 1/2	17	18 1/2

8908

Specs	XS (4-5)	S (6-8)	M (10-12)	L (14-16)
FRONT HPS LENGTH	16 1/2	17 1/2	19	20 1/2
BACK HPS LENGTH	18	19	20 1/2	22
CHEST WIDTH	13	14	15 1/2	17 1/2

9000

Specs	XS (4-5)	S (6-8)	M (10-12)	L (14-16)
HPS LENGTH	20 1/2	21 1/2	22 1/2	23 1/2
CHEST WIDTH	11 1/2	12 1/2	13 3/4	15

9004, 9207

Specs	XS (4-5)	S (6-8)	M (10-12)	L (14-16)
HPS LENGTH	16 1/2	17 1/2	19	20 1/2
CHEST WIDTH	11 1/2	12 1/2	13 3/4	15

9005

Specs	XS (4-5)	S (6-8)	M (10-12)	L (14-16)
FRONT HPS LENGTH	16 1/2	17 1/2	18 1/2	19 1/2
BACK HPS LENGTH	17 1/4	18 1/4	19 1/4	20 1/4
CHEST WIDTH	11 1/2	12 1/2	14	15 1/2

SIZING CHARTS

9007

Specs	XS (4-5)	S (6-8)	M (10-12)	L (14-16)
HPS LENGTH	17	18	19 1/2	21
CHEST WIDTH	13 1/2	14 1/2	15 3/4	17 1/4

9012

Specs	XS (4-5)	S (6-8)	M (10-12)	L (14-16)
HPS LENGTH	16 1/2	17 1/2	18 1/2	19 1/2
CHEST WIDTH	12	13	14	15

9015

Specs	XS (4-5)	S (6-8)	M (10-12)	L (14-16)
FRONT HPS LENGTH	21	22	23	24
BACK HPS LENGTH	15	16	17	18
CHEST WIDTH	12 1/4	13 1/4	14 1/4	15 1/4

9018

Specs	XS (4-5)	S (6-8)	M (10-12)	L (14-16)
FRONT HPS LENGTH	16 1/2	17 1/2	18 1/2	19 1/2
BACK HPS LENGTH	18 1/4	19 1/4	20 1/4	21 1/4
CHEST WIDTH	14 1/2	15 1/2	16 1/2	17 1/2

9209

Specs	XS (4-5)	S (6-8)	M (10-12)	L (14-16)
HPS LENGTH	16 1/2	17 1/2	18 1/2	19 1/2
CHEST WIDTH	11 3/4	12 3/4	13 3/4	14 3/4

9008

Specs	XS (4-5)	S (6-8)	M (10-12)	L (14-16)
HPS LENGTH	23 1/2	24 1/2	25 1/2	27
CHEST WIDTH	11 1/2	12 1/2	13 3/4	15

9013

Specs	XS (4-5)	S (6-8)	M (10-12)	L (14-16)
FRONT HPS LENGTH	18	19	20	21
BACK HPS LENGTH	21	22	23	24
CHEST WIDTH	11 3/4	12 3/4	13 3/4	15 1/4

9016

Specs	XS (4-5)	S (6-8)	M (10-12)	L (14-16)
HPS LENGTH	18 1/4	19 1/4	20 1/4	21 1/4
CHEST WIDTH	13 1/2	14 1/2	15 1/2	16 1/2

9019

Specs	XS (4-5)	S (6-8)	M (10-12)	L (14-16)
HPS LENGTH	17 1/4	18 1/4	19 1/4	20 1/4
CHEST WIDTH	14 1/4	15 1/4	16 1/4	17 1/4

9206

Specs	XS (4-5)	S (6-8)	M (10-12)	L (14-16)
FRONT HPS LENGTH	16 1/4	17 1/4	18 1/4	19 1/4
BACK HPS LENGTH	17 3/4	18 3/4	19 3/4	20 3/4
CHEST WIDTH	12	13	14 1/2	16

9011

Specs	XS (4-5)	S (6-8)	M (10-12)	L (14-16)
HPS LENGTH	17	18	19 1/2	21
CHEST WIDTH	12	13	14	15

9014

Specs	XS (4-5)	S (6-8)	M (10-12)	L (14-16)
HPS LENGTH	15 3/4	16 3/4	18 1/4	19 3/4
CHEST WIDTH	12	13	14	15 1/2

9017

Specs	XS (4-5)	S (6-8)	M (10-12)	L (14-16)
FRONT HPS LENGTH	18 3/4	19 3/4	20 3/4	21 3/4
BACK HPS LENGTH	20	21	22	23
CHEST WIDTH	12	13	14	15

9208

Specs	XS (4-5)	S (6-8)	M (10-12)	L (14-16)
HPS LENGTH	19 1/2	20 1/2	21 1/2	22 1/2
CHEST WIDTH	12 1/2	13 1/2	14 1/2	15 1/2

SIZING SPECIFICATIONS : BOYS

9601

Specs	XS (4-5)	S (6-8)	M (10-12)	L (14-16)
HPS LENGTH	19 1/2	20 1/2	21 1/2	22 1/2
CHEST WIDTH	12 1/2	13 1/2	14 1/2	15 1/2

9607

Specs	XS (4-5)	S (6-8)	M (10-12)	L (14-16)
HPS LENGTH	21 1/2	22 1/2	24	25 1/2
CHEST WIDTH	14 3/4	15 3/4	16 3/4	17 3/4

9603

Specs	XS (4-5)	S (6-8)	M (10-12)	L (14-16)
HPS LENGTH	20	21	22	23
CHEST WIDTH	12 1/2	13 1/2	14 1/2	15 1/2

9604, 9605

Specs	XS (4-5)	S (6-8)	M (10-12)	L (14-16)
HPS LENGTH	20	21	22	23
CHEST WIDTH	13 1/2	14 1/2	15 1/2	16 1/2



TERMS & CONDITIONS

Buyer(s) consent to the following Terms and Conditions: Seller's acceptance of the Buyer's orders is expressly made conditional on Buyer's assent to these terms and conditions. Unless otherwise agreed to in writing by all parties, the terms and conditions set forth on this credit/buyer application, order confirmation and/or invoice supersede the terms and conditions of the Buyer's purchase order(s) and will govern all transaction between the Buyer and the Seller. These terms and conditions also apply to all future transaction unless modified in writing signed by all parties. Seller specifically, rejects any terms or provisions which set any standards, specifications or damages related to quality and time of delivery. Buyer's acceptance of goods delivered by Seller in conjunction with this invoice, credit/buyer application, or order confirmation is an acknowledgement by Buyer of its acceptance of these terms and conditions.

Notice of Defects/Returns: The Buyer must make any claims of defects, including but not limited to those related to shortages, quality of specification, within the first 5 working days after the receipt of merchandise. The Seller cannot be responsible for shortages when shipments are directed to a third party. It is responsibility of Buyer to inspect upon receipt, that all merchandise delivered matches its order.

Modification of Goods: Garment dyers and printers beware: modify the goods and you own them! Once merchandise is printed, garment dyed, washed or altered in anyway, the Buyer cannot return or make a claim relation to such merchandise. The Seller is not responsible for fallout or loss during the garment dye process. Regularly test the merchandise for garment durability. Garment modified by the Buyer, or modified by seller at the request of Buyer, may not be returned. Seller may agree, as an accommodation to Buyer, to purchase these items. Should seller make this accommodation, Buyer authorizes Seller to sell such garments and warrants that it has the right to sell such goods to Seller and releases and indemnifies seller from any liability related to labels, marks designs or other intellectual property rights in anyway related to the sale or distributions of these goods.

Returns: It is the responsibility of Buyer to inspect upon receipt, that all merchandise delivered matches its order. A written authorization form the seller must be obtained by the Buyer for any returned merchandise. All returns must be made within 5 working days of the invoice date. The Seller will charge Buyer a 15% restocking fee for any returned merchandise that is returned without written authorization from seller due to a claim for quality. Buyer authorizes seller to sell any garments with Buyer's label, mark, custom, design or print that have been returned, rejected or abandoned.

Acceptance of goods with Know Defects Waives Claims for Damages: Buyer must notify Seller in writing of all claims for damages resulting from late delivery or any other defect that is known to Buyer at the time Buyer accepts the merchandise. Buyer hereby waives any claim for damages resulting from any defect, buyer is aware of including late delivery, at the time Buyer accepts the merchandise.

Jurisdiction: Any transactions between the Buyer and the Seller are governed by the laws of California, and the Buyer and any Guarantor hereby consent to the jurisdiction of the courts, for any claims or controversies arising. It is understood that should the Buyer become Delinquent in payment, no further credit will be Extended and the Seller will charge the Buyer a past due service charge at the rate of 1% per month (18% per annum), collection agency fees in the amount of 30%, and/or reasonable attorney's fees, and all other costs and expenses which may be incurred by the Seller in the enforcement of the terms and conditions set forth on this invoice, credit application, and/or order confirmation. Any returned checks will be charged back to the Buyer; and a \$50 handling fee will be charged to the Buyer. If the Buyer's account is insured and the Buyer's account is turned over to a receivable insurance company for a claim, Seller can also charge the client an additional 30% of the principal amount due which is in default. It is understood that these charges are a reasonable estimation of the damages Seller will incur upon Buyer's default in the sale of garments by the Seller to the Buyer. The Seller also reserves the right to sue the Buyer or its Guarantor in the province of state of its domicile.

EXCLUSION OF IMPLIED WARRANTIES: THE BUYER RECOGNIZES THAT IMPLIED WARRANTIES OF MERCHANTABILITY AND FITNESS FOR PARTICULAR PURPOSE AND ALL OTHER WARRANTIES IMPLIED ARE EXCLUDED FROM ANY TRANSACTION BETWEEN BUYER AND SELLER AND SHALL NOT APPLY TO THE GOODS SOLD BY SELLER. SELLER SHALL ALSO NOT BE LIABLE FOR ANY CONSEQUENTIAL DAMAGES

No Responsibility: Buyer acknowledges that Seller has no responsibility for any performed by any vendor referred by Buyer and hereby waives any right to assert any claim against Seller for work performed by any other firm, including but not limited to claims for negligent referral, agency or respondent superior.

Deterioration of Buyer's Credit: The Seller has the right, in addition to other Remedies provided by law, to terminate any delivery or suspend further deliveries of other shipments in the event the Buyer fails to pay for any one shipment when the same becomes due. Should the Buyer's financial condition become unsatisfactory to the Seller, the Seller may require cash payments or satisfactory securities for delivery of goods.

Personal Guaranty: In consideration of such credit extended and/or to be extended by Pima Apparel, Inc. in its discretion to Buyer, or the release of goods paid by credit card or check, the individual(s) signing this invoice, credit/buyer application, other confirmation, or delivery receipt or check or credit slip (who, if more than one, shall be jointly and severally bond) hereby unconditionally guarantee(s) to Pima Apparel, Inc. and its successors, endorsees, and assigns the punctual payment when due, with such interest as may accrue thereon either before or after any maturity(ies) thereof, of all debts and obligations of Buyer and any other party or parties, now existing or hereafter arising, as well as the performance and observance by Buyer of the terms conditions, stipulations, and agreements of Buyer contained in this invoice, credit application, and/or order confirmation of Pima Apparel, Inc. This Guaranty will be continuing and irrevocable guaranty and indemnity for such indebtedness of Buyer. The undersigned do(es) hereby waive notice of acceptance of this Guaranty, notice of occurrence of any default, presentments, demands, protest, and notices of any and all action at any time taken or omitted by Buyer regarding its indebtedness to Pima Apparel, Inc. The signer consent(s) to any modification or renewal of the credit hereby guaranteed. This guaranty shall bind the executors, administrators, and assigns of the undersigned and shall remain in force and effect unless and until canceled by written notice sent to Seller by registered mail, in which case it shall then be binding as to any balances still owing and outstanding as of the date of Seller receipt of such registered notice. This Guaranty also gives Pima Apparel, Inc. the right to investigate credit from time to time of both Buyer and the Personal Guarantor(s), if deemed necessary by Seller.

Agreement and Acknowledgement: Buyer(s) have carefully read and agree to The Terms and Conditions. Buyer authorizes Pima Apparel, Inc. to verify the credit of the Company and/or the individual(s) whose signature(s) appears on this or the other documents specified above. Buyer and guarantor(s) authorize its bank(s) and /or business references to release credit information of Buyer and/or Guarantor(s) as requested by Pima Apparel, Inc.

PIMA

A P P A R E L

1651 South Balboa Ave.

Ontario, California 91761

Tel: 909-930-2666 Fax: 909-930-0666

Toll Free: 888-988-7462(PIMA)

**It's not about
fashion
it's about
you**

www.pimaapparel.com